

Product Catalogue



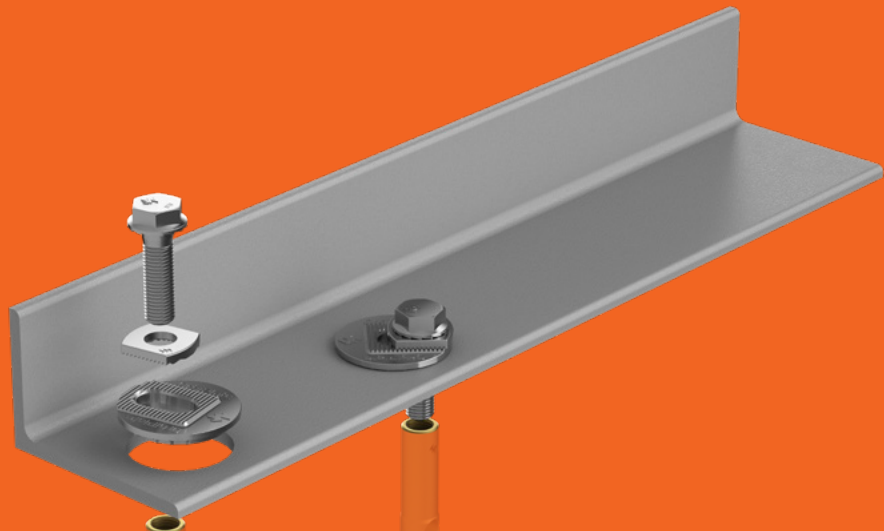
View our
products
online fast.

For more information
on our products go to
ramset.com.au or call 1300 780 063



WELCOME

The Ramset™ Product Guide contains basic details on our product ranges to enable you to make the right choice for your application.



We have developed this set of easily recognisable icons to assist with product selection.

PERFORMANCE RELATED SYMBOLS

Indicates the suitability of product to specific types of performance related situations.



Has good resistance to cyclic and dynamic loading. Resists loosening under vibration.



Anchor has an effective pull-down feature, or is a stud anchor. It has the ability to clamp the fixture to the base material and provide high resistance to cyclic loading.



Suitable for use in seismic design according to ANZ Standards (eg AS/NZ 1170.4) or independent seismic performance data available from either an ICC Evaluation report or European Technical Assessment.



Cracked concrete.



Fire rated in accordance with the applicable standard or independent assessment (i.e. Australian Standards or European Technical Assessment)



May be used close to edges (or another anchor) without risk of splitting the concrete.



Temporary or removable anchor.

MATERIAL SPECIFICATION SYMBOLS

Indicates the base material and surface finish to assist in selection with regard to corrosion or environmental issues.



Steel Zinc Plated
Minimum thickness 5 micron.
Recommended for internal applications only.



Steel Hot Dipped Galvanised to AS/NZS 4680:2006 and AS/NZS 1214:2016.
Minimum thickness 42 micron.
For external applications.



Steel Mechanically Galvanised
Minimum thickness 42 micron.
For external applications.



Climaseal
Minimum thickness 75 microns.
For internal applications.



AISI Grade 316 stainless steel, resistant to corrosive agents including chlorides and industrial pollutants. Recommended for internal or external applications in marine or corrosive environments.



Stainless steel high corrosion resistance .
HCR Grade 1.4529/1.4565.



Corrosion resistant.
Not recommended for direct exposure to sunlight.

INSTALLATION RELATED SYMBOLS

Indicates the suitable positioning and other installation related requirements.



Suitable for floor applications.



Suitable for wall applications.



Suitable for overhead applications.



Suitable for hollow brick/block and hollow core concrete applications.



Anchor can be through fixed into substrate using fixture as template.



Suitable for AAC and lightweight concrete applications.



Anchors suitable for use in dry holes.



Anchors suitable for use in damp holes.



Anchors suitable for use in holes filled with water.



Suitable for use in drilled holes.



Suitable for use in cored holes.



Suitable for contact with drinking water for human consumption.



Direct Fixing Tools and Accessories

pg 6-19

Ramset™ has provided the direct fixing market with innovative Gas Technology & Powder Actuated Tools, saving valuable time on site. We have a range of tools to suit different direct fixing applications across:

- Ceiling & Partitioning
- Insulation
- Electrical
- Plumbing
- Formwork
- Pest Control



Power Tools and Accessories

pg 20-44

Ramset™ Power Tools have been used by construction trades for over 40 years in Australia and New Zealand. We understand the need for Power, Toughness and Reliability in heavy construction and provide premium tools with the latest vibration technology. Our high performance range includes:

- DynaDrill™ Rotary Hammers
- Cordless Tools
- Carbide Tipped Drill Bits
- Diamond Drilling & Cutting



Mechanical Anchoring

pg 45-70

Our Mechanical Anchors are manufactured to our high quality standards to ensure maximum confidence the product is fit for purpose and will meet the designers load requirements. The Ramset™ Mechanical Anchoring range consists of:

- Xtrem™ Seismic Anchors
- Spafec™ Safety Anchors
- Boa™ Coil Expansion Anchor
- TruBolt™ Stud Anchors
- AnkaScrew™ Screw In Anchors
- DynaBolt™ Sleeve Anchors
- TruFast™ Push Pull Suspension Anchor
- DynaSet™ Drop-In Anchor



Chemset™ Chemical Anchoring

pg 71-81

Ramset™ Chemical Anchors are approved for installation in challenging site conditions such as water immersion, to provide long term reliable service. The Ramset™ Chemical Range consists of:

- Epcon™ C8 Xtrem™
- ChemSet™ 801 Xtrem™ new XC2
- ChemSet™ Reo502™ PLUS
- ChemSet™ 801 Xtrem™
- ChemSet™ 101 PLUS
- ChemSet™ Anchor Studs
- Internal Threaded Anchor Inserts
- ChemSet™ Installation Accessories



Construction Chemicals

pg 82-93

Ramset™ Construction Chemicals covers all the essential onsite products to finish off your project. The construction chemical range includes:

- Acrylic and polyurethane sealants for interior and exterior applications
- Construction adhesives
- Expanding polyurethane foams
- Fire rated foam and sealant
- Epoxy repair mortar and grout.
- Concrete additives for render and remedial work.



Erection and Installation

pg 94-97

Our unique engineered bracing and connection systems, provide simple solutions for structural concrete connection, reducing both labour and material costs. Our offer in this category includes:

- OrbiPlate™
- ReidBrace™

Direct Fixing Tools and Accessories

Ramset™ has provided the direct fixing market with innovative Gas Technology & Powder Actuated Tools, saving valuable time on site.

We have a range of tools to suit different direct fixing applications across:

- Ceiling & Partitioning
- Insulation
- Electrical
- Plumbing
- Formwork
- Pest Control



DIRECT FIXING TOOLS AND ACCESSORIES



GAS TECHNOLOGY TOOLS

CableMaster™

CableMaster™ C-Plus®

Description

Boost productivity with the Ramset™ CableMaster™ C-Plus®. The fast, durable and reliable direct fixing system for plumbing, data and electrical installations enables a fixing rate 8x faster than traditional drill and fix, and up to 10,000 shots per battery charge. Paired with the PulaLift™ 800 Plus pole system, the CableMaster™ C-Plus® can be safely used in overhead applications, delivering fast, consistent and reliable performance while reducing exposure to concrete dust.



Application
Example

✓ Features & Benefits

- Massive 95J power – Consistent fixings even in extreme applications.
- Compact design with a 20 pin magazine that allows the tool to fit into tight spaces.
- Battery Gauge – Helps to avoid running out of battery power.
- Fuel Cell Gauge – Always know when to change fuel cells.
- Li-Ion Battery – Fast charge, long life.
- Tool-less Depth of Drive Adjustment.
- Power Saving Technology – Isolates battery when tool is not in use.
- 30 pin magazine accessory available for volume applications.
- Easily removable fastener guide and magazine.
- Greater tool clearance – Allows the tool to fit in close to edge applications.

✓ Trades & Applications

Applications	Electrical Contractor	Plumbing Contractor	Fire & Security
Permanent cable suspension to concrete and steel	✓		
Pipe suspension systems to concrete and steel		✓	
Fire and security cabling to concrete and steel			✓
Temporary cable suspension to concrete and steel	✓		

Product Codes & Specifications

Item Code	Impact Energy	Magazine Capacity	Weight	Pin Capacity
CMCPLUS	95J	20 Pin	3.4kg	15-27mm

CableMaster™ C-Plus® Accessories

Item Code	Description	Pack Qty
CRADLECMPLUS	Cradle only to suit CableMaster™ 800 Plus /C-Plus (no pole or tool)	1
CRADLECM800PLUS	CableMaster™ 800 Cradle	1
V4-3	3ft PulsaLift™ 800 Pole with Trigger	1
V4-EXT	3ft PulsaLift™ 800 Pole extension	1
019336	Pulsa 800/800 Plus Li-Ion Battery	1
018546	Battery Charger (includes power supply)	1
014641	Magnetic Washer Adapter	1
P8HC627	Premium Drive Pin Hard Concrete/Steel	1
019337	Pulsa 800/800 Plus 20 Pin Magazine	1
019683	Pulsa 800/800 Plus 50 Pin Magazine	1



CableMaster™ C-Plus® Gas Pins And Fuel Cells

Standard Duty

Item Code	Shank Length (mm)	Pack Qty
P8C620	Standard Pin 20mm	500
P8C625	Standard Pin 25mm	500
P8C630	Standard Pin 30mm	500
P8C635	Standard Pin 35mm	500



Heavy Duty For Steel And Hard Concrete

Item Code	Desc, Shank Length (mm)	Pack Qty
P8HC615	Premium Hard Concrete & Steel 15mm	500
P8HC617	Premium Hard Concrete & Steel 17mm	500
P8HC622	Premium Hard Concrete & Steel 22mm	500



Electrical & Plumbing Fixing Packs

Item Code	Description	Pack Qty
P8CPGCL	Contractor Pack - ClipElec + Hard Conc. Pins 22mm	500
P8CPGLHC617	Contractor Pack - ClipElec + Hard Conc. Pins 17mm	500
P8CPGDLHC617	Contractor Pack - DataLec Clip + Hard Conc. Pins 17mm	500
P8CPGDLHC622	Contractor Pack - DataLec Clip + Hard Conc. Pins 22mm	500
P8CPGCT	Contractor Pack - CTClip + Hard Conc. Pins 22mm	500
P8CPGDAS20	C/Pack - Direct Align H/saddle 20mm	400
P8CPGDAS25	C/Pack - Direct Align H/saddle 25mm	400
P8CPGTRH	Contractor Pack - Threaded Rod Brkt.	400
P8CPGCWB	Contractor Pack - Catenary Wire Brkt.	400
SPMW	Strap & Plate Mounting Washer	500

* Contractor Packs contain electrical clips, pins, fuel cells and cable ties where applicable.



GAS TECHNOLOGY TOOLS

CableMaster™

CableMaster™ 800 Plus

Description

Boost productivity with the Ramset™ CableMaster™ 800 Plus. The fast, durable and reliable direct fixing system for plumbing, data and electrical installations enables a fixing rate 8x faster than traditional drill and fix, and up to 3500 shots per battery charge. Paired with the PulaLift™ 800 Plus pole system, the CableMaster™ 800 Plus can be safely used in overhead applications, delivering fast, consistent and reliable performance while reducing exposure to concrete dust.



Application
Example

✓ Features & Benefits

- Massive 82J power – Consistent fixings even in extreme applications.
- Compact design with 20 pin magazine allows the tool to fit into tight spaces.
- Battery Gauge – Helps avoid running out of battery power.
- Fuel Cell Gauge – Always know when to change fuel cells.
- Lithium Battery – Fast charge, long life.
- Tool-less Depth of Drive Adjustment.
- Power Saving Technology – Isolates battery when tool is not in use.
- 50 pin magazine accessory available for volume applications.
- Easily removable fastener guide and magazine.
- Greater tool clearance – Allows the tool to fit in close to edge applications.
- Greater track clearance – Allows the tool to fit in deep track, up to 57mm.
- Removable Support Leg – Ensures tool is at 90° to work surface for optimum fixings
- Electronically controlled fuel injection – Consistent power in a wide temperature range.

✓ Trades & Applications

Applications	Electrical Contractor	Plumbing Contractor	Fire & Security
Permanent cable suspension to concrete and steel	✓		
Pipe suspension systems to concrete and steel		✓	
Fire and security cabling to concrete and steel			✓
Temporary cable suspension to concrete and steel	✓		

Product Codes & Specifications

Item Code	Impact Energy	Magazine Capacity	Weight	Pin Capacity
CM800PLUS	82J	20 Pin	3.8kg	15-40mm

CableMaster™ 800 Plus Accessories

Item Code	Description	Pack Qty
PL800PLUS	Pole and cradle kit to suit CableMaster™ 800 Plus	1
CRADLECM800PLUS	Cradle only to suit CableMaster™ 800 Plus (no pole or tool)	1
PULSALIFT800	Pole tool and cradle kit to suit CableMaster™ 800 only	1
CM800CRADLE	Cablemaster™ 800 Cradle	1
V4-3	3ft PulsaLift™ 800 Pole with Trigger	1
V4-EXT	3ft PulsaLift™ 800 Pole extension	1
019336	Pulsa 800/800 Plus Battery	1
018546	Battery Charger (includes power supply)	1
019337	Pulsa 800/800 Plus 20 Pin Magazine	1
019683	Pulsa 800/800 Plus 50 Pin Magazine	1
018423	CableMaster™ 800 Fastener Guide	1
014641	Magnetic Washer Adapter	1



CableMaster™ 800 Plus Gas Pins And Fuel Cells

Standard Duty

Item Code	Shank Length (mm)	Pack Qty
P8C620	Standard Pin 20mm	500
P8C625	Standard Pin 25mm	500
P8C630	Standard Pin 30mm	500
P8C635	Standard Pin 35mm	500



Heavy Duty For Steel And Hard Concrete

Item Code	Desc, Shank Length (mm)	Pack Qty
P8HC615	Premium Hard Concrete & Steel 15mm	500
P8HC617	Premium Hard Concrete & Steel 17mm	500
P8HC622	Premium Hard Concrete & Steel 22mm	500



Electrical & Plumbing Fixing Packs

Item Code	Description	Pack Qty
P8CPGCL	Contractor Pack - ClipElec + Hard Conc. Pins 22mm	500
P8CPGLHC617	Contractor Pack - ClipElec + Hard Conc. Pins 17mm	500
P8CPGDLHC617	Contractor Pack - DataLec Clip + Hard Conc. Pins 17mm	500
P8CPGDLHC622	Contractor Pack - DataLec Clip + Hard Conc. Pins 22mm	500
P8CPGCT	Contractor Pack - CTClip + Hard Conc. Pins 22mm	500
P8CPGDAS20	C/Pack - Direct Align H/saddle 20mm	400
P8CPGDAS25	C/Pack - Direct Align H/saddle 25mm	400
P8CPGTRH	Contractor Pack - Threaded Rod Brkt.	400
P8CPGCWB	Contractor Pack - Catenary Wire Brkt.	400
SPMW	Strap & Plate Mounting Washer	500

* Contractor Packs contain electrical clips, pins, fuel cells and cable ties where applicable.



GAS TECHNOLOGY TOOLS

TrakFast™

TrakFast™ 800 Plus

Description

Work smarter and maximise your productivity with the Ramset™ TrakFast™ 800 Plus. Remaining a light 3.8kg, the streamlined design and excellent line of sight allow for easy access in awkward spaces. Featuring a 50 pin magazine, you can work more and charge less, with 3500 shots per battery charge. Designed for the quick and safe installation of steel partitioning track, pest control mesh and formwork systems, the Ramset™ TrakFast™ 800 Plus delivers fast, consistent and reliable performance while minimising exposure to concrete dust.



✓ Features & Benefits

- Massive 100J power – Consistent fixings even in extreme applications.
- 50 pin magazine – Reduces downtime in loading the magazine.
- Battery Gauge – Helps avoid running out of battery power.
- Fuel Cell Gauge – Always know when to change fuel cells.
- Lithium Battery – Fast charge, long life.
- Tool-less Depth of Drive Adjustment.
- Power Saving Technology – Isolates battery when tool is not in use.
- Optional 20 pin magazine for tight spaces.
- Easily removable fastener guide and magazine.
- Greater tool clearance – Allows the tool to fit in close to edge applications.

✓ Trades & Applications

Applications	Ceiling & Partitioning Contractor	Formworker	Pest Control Contractor
Track to concrete	✓		
Track to steel	✓		
Plywood to steel		✓	
Sacrificial steel formwork to steel		✓	
Pest control mesh to concrete			✓

Product Codes & Specifications

Item Code	Impact Energy	Magazine Capacity	Weight	Pin Capacity
TF800PLUS	100J	50 Pin	3.9kg	15-40mm

GAS TECHNOLOGY TOOLS

TrakFast™

TrakFast™ 800 Plus Accessories

Item Code	Description	Pack Qty
019336	Pulsa 800/800 Plus Battery	1
018546	Battery Charger (includes power supply)	1
018424	TrakFast 800 Fastener Guide	1
014641	Magnetic Washer Adaptor	1



Accessories To Suit Magnetic Washer Adaptor

Item Code	Shank Length (mm)	Pack Qty
011204	25mm Washers	1000



Standard Duty

Item Code	Shank Length (mm)	Pack Qty
P8C620	Standard Pin 20mm	500
P8C625	Standard Pin 25mm	500
P8C630	Standard Pin 30mm	500
P8C635	Standard Pin 35mm	500



Heavy Duty For Steel And Hard Concrete

Item Code	Desc, Shank Length (mm)	Pack Qty
P8HC615	Premium Hard Concrete & Steel 15mm	500
P8HC617	Premium Hard Concrete & Steel 17mm	500
P8HC622	Premium Hard Concrete & Steel 22mm	500



Spiral Knurled Pins For Fixing Plywood To Steel

Item Code	Description	Pack Qty
P8PLY138	Hard Steel Spiral Knurled Pins	1000



GAS TECHNOLOGY TOOLS

InsulFast™

InsulFast™ T4

Description

The Ramset™ InsulFast™ T4 gas system is designed to efficiently install insulation anchors directly to concrete, block, steel stud and timber construction saving valuable time. Ramset's innovative fastener is engineered with an integrated cap for maximum thermal efficiency.



Application
Example



Steel & Timber Pins (BLACK)

- 2.54mm diameter pin with a spiral knurl shank for holding power and 38mm penetration

Concrete Pins (WHITE)

- 3.175mm diameter pin maximum embedment of 19mm

✓ Features & Benefits

- Fast fixing method, much more efficient than PA tool insulation anchor fixing.
- More ergonomic, less recoil than a PA tool.
- A single gas cell will fix a whole box (500) of anchors.
- Eliminates need to tape over fixings due to integrated cap.
- Pre-loaded pins in anchors, one simple loading action.
- Smart tool with gas and battery gauges for uninterrupted productivity.
- Auto shut off feature to conserve energy.
- Visibly branded Ramset™ anchor and pin for easier specification and compliance checks.

✓ Trades & Applications

Applications	Insulation Installers	Ceiling & Partitioning Contractor
Insulation fixing	✓	✓
Fastening Insulation to Concrete	✓	✓
Fastening Insulation to Steel	✓	✓

Product Codes & Specifications

Item Code	Impact Energy	Magazine Capacity	Weight	Pin Capacity
T4IF	80J	N/A	3.6kg	25-100mm Insulation Pins

GAS TECHNOLOGY TOOLS

InsulFast™

InsulFast™ T4 Accessories

Item Code	Description	Pack Qty
019336	Pulsa 800/800 Plus Battery	1
018546	Battery Charger (includes power supply)	1



InsulFast™ T4 Insulation Fasteners

Item Code	Description	Rigid Insulation Thickness	Soft Insulation Thickness	Fastener Colour
T4IG625	White anchor 25mm pin (qty 500) and 1x fuel cell	25mm	25mm -30mm	White
T4IG625B	Black anchor 25mm pin (qty 500) and 1x fuel cell	25mm	25mm -30mm	Black
T4IG638	White anchor 38mm pin (qty 500) and 1x fuel cell	38mm	38mm -45mm	White
T4IG650	White anchor 50mm pin (qty 500) and 1x fuel cell	50mm	50mm -55mm	White
T4IG650B	Black anchor 50mm pin (qty 500) and 1x fuel cell	50mm	50mm -55mm	Black
T4IG663	White anchor 63mm pin (qty 500) and 1x fuel cell	60mm	60mm -65mm	White
T4IG675	White anchor 75mm pin (qty 500) and 1x fuel cell	75mm	75mm -80mm	White
T4IG675B	Black anchor 75mm pin (qty 500) and 1x fuel cell	75mm	75mm -80mm	Black
T4IG6100	White anchor 100mm pin (qty 500) and 1x fuel cell	100mm	100mm -110mm	White
T4IG6100B	Black anchor 100mm pin (qty 500) and 1x fuel cell	100mm	100mm -110mm	White

Note: Additional sizes available on request. MOQ, additional lead time and freight charges may apply.



InsulFast™ T4 Fuel Cells

Item Code	Description	Pack Qty
014605	P800 Fuel Cell	1



GAS TECHNOLOGY TOOLS

Legacy Tools

TrakFast™

Description

For fast installation of partitioning and track, use the Ramset™ TrakFast™ gas tool to provide high volume repetitive fixing into a range of building materials.

Features & Benefits

- Increased durability and reliability.
- Off position to prevent draining the battery when tool is not in use.
- Cordless - self powered, no set up time required.
- Sequential actuation - safe operation.
- Tool automatically resets piston.
- Narrow nose and profile to reach inside deep leg track.
- Soft cushioned grip.
- Carrying case.
- Well balanced.
- Mechanical fuel injection.
- Low maintenance.



Product Codes & Specifications

Item Code	Impact Energy	Magazine Capacity	Weight	Pin Capacity
TF1200	77J	40 Pin	3.8kg	13-38mm

TrakFast™ Gas Pins And Fuel Cells

Trakfast™ Pins (TF1200, TF1100) & Fuel Packs - Standard Duty

Item Code	Shank Length (mm)	Pack Qty
FPP012	13	1000
FPP034B	19	1000
FPP100	25	1000
FPP114	32	1000



Trakfast™ Pins (TF1200, TF1100) & Fuel Packs - Heavy Duty

Item Code	Shank Length (mm)	Pack Qty
FPP012S	13	1000



GAS TECHNOLOGY TOOLS

Legacy Accessories

Legacy Accessories, Chargers & Batteries

Item Code	Description	Pack Qty
TrakFast™ / InsulFast™ GT3		
B0092	Battery - TrakFast (TF1200)	1
B0020	Battery Charger - TF1200 (requires power supply)	1
TFPS	Battery Charger Power Supply (TF1200)	1
TrakMaster™		
TMBP	Battery - TrakMaster / CableMaster / InsulFastGT2	1
TMBC	Battery Charger (requires power supply)	1
TMBCPS	Battery Charger Power Supply	1
337700	Fastener Guide - TrakMaster	1
CableMaster™		
TMBP	Battery - TrakMaster / CableMaster / InsulFastGT2	1
TMBC	Battery Charger (requires power supply)	1
TMBCPS	Battery Charger Power Supply	1
336800	Fastener Guide - CableMaster	1
019337	Pulsa 800/800 Plus 20 Pin Magazine	
019683	Pulsa 800/800 Plus 50 Pin Magazine	
TrakFast™ - TF1100		
B20542	Battery - TrakFast - TF1100	1
TFBC	Battery Charger - TrakFast TF1100 (requires power supply)†	
TMBCPS	Battery Charger Power Supply	1
Common Accessories		
B20544L	Gas Tool Degreaser / Lubricant	1

Legacy Fuel Packs

Item Code	Description	Pack Qty
TFGAS	TrakFast Fuel Cell Pack	6



POWDER ACTUATED FIXING TOOLS

Concrete Framing Tool

FrameBoss™ XP & XPM

Description

The FrameBoss™ XPM is a semi-automatic powder actuated tool capable of fixing 10 pins without the need to reload or cycle the tool. The automatic piston return system and 10 pin magazine enable faster fixing rates with less effort. The magazine can be adjusted to lock into a number of positions to allow the tool to be used in confined spaces. The FrameBoss™ XP tool is supplied with a single shot fastener guide so that the tool to be used with longer fasteners and assemblies such as brackets and clips.



Application
Example



✓ Features & Benefits

- Automatic piston return.
- No manual cycling required.
- Easy to maintain on site.
- 10 Pin magazine and single shot fastener guide.
- 100mm single shot capacity.
- 75mm magazine capacity.
- 400J maximum impact energy.
- Power and depth of drive adjustment.

✓ Trades & Applications

Applications	Residential Home Builder	Formworker	Ceiling & Partitioning Contractor	Brick Layer
Timber to concrete	✓	✓		
Timber to steel	✓	✓		
Sacrificial steel formwork to steel		✓		
Steel Track to concrete and steel			✓	
Brick ties to concrete and steel	✓			✓

Product Codes & Specifications

Item Code	Impact Energy	Pin Capacity	Weight	Power Load
FRAMEBOSSXP	400J	25mm-100mm single pins	3.7kg	.27 Strip
FRAMEBOSSXPM	400J	25mm-75mm collated pins	4kg	.27 Strip

POWDER ACTUATED FIXING TOOLS

Pins and Consumables

Powder Actuated Tool **Drive Pins**

Drive Pins And Power Loads

FOR USE WITH FrameBoss™, FrameMaster™, FormMaster™ & JobMaster™

Item Code	Shank Length (mm)	Head Diameter (mm)	Pack Qty
LDU25	25	8	100
LDU32	32	8	100
LDU50	50	8	100
LDU65	65	8	100
LDU75	75	8	100
LDU90	90	8	100
LDU99	100	8	100



Collated Drive Pins

FOR USE WITH FrameBoss™

Item Code	Shank Length (mm)	Head Diameter (mm)	Pack Qty
C960C*	60	9	300
C975C*	75	9	300

For use with FrameBoss™ 75 & FrameBoss™ XPM only



Pins For Fixing To Structural Steel

Item Code	Description	Pack Qty
SC950	Pin for fixing 35mm timber to steel	100
SC960	Pin for fixing 45mm timber to steel	100



POWDER ACTUATED FIXING TOOLS

Pins and Consumables

Powder Actuated Tool **Drive Pins**

Collated Pins For Fixing To Structural Steel & Hard Concrete

FOR USE WITH FrameBoss™, FrameBoss™ 75 & FrameBoss™ XPM

Item Code	Shank Length (mm)	Head Diameter (mm)	Pack Qty
SC925C	25	9	500
SC930C	30	9	500
SC940C	40	9	300
SC950C	50	9	300
SC960C	60	9	300



Sacrificial Formwork Pins

FOR USE WITH FrameBoss™ XP FrameBoss™, FormMaster™ & JobMaster™

Item Code	Description	Pack Qty
SBR9	20mm Pin for Steel with 14mm Washer	100



Washed Pin Assemblies

Item Code	Shank Length (mm)	Head Diameter (mm)	Pack Qty
LWU25	25	22	100
LWU32	32	22	100



Powder Actuated Accessories - Clips

Item Code	Description	Pack Qty
RCA25F	Angle (Ramclip)	100



POWDER ACTUATED FIXING TOOLS

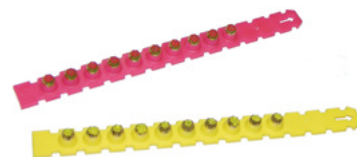
Chargers and Accessories

Powder Actuated Tool **Strip Powerloads**

STRIP POWERLOADS .27 calibre

FOR USE WITH FrameBoss™, FrameMaster™, FormMaster™, TyMaster, Rocket, Striker, S75A, & TS750 (TS60P)

Item Code	Strength	Colour	Pack Qty
PLSYW22	Medium	Yellow	100
PLSRD22	Strong	Red	100



Powder Actuated Tool **Accessories**

Item Code	Description	Pack Qty
-----------	-------------	----------

FrameBoss™ XP, FrameBoss™ XPM, FrameBoss™ & FrameBoss™ 75

011483	Piston Return Spring (x1)	1
010983	Piston Insulation Ring (x2)	1

Accessories

011158	75mm Magazine to suit XP tool	1
PA9316	Lubricating & Releasing Oil	1



Power Tools and Accessories

Ramset™ Power Tools have been used by construction trades for over 40 years in Australia and New Zealand. We understand the need for power, toughness and reliability in heavy construction and provide premium tools with the latest vibration technology. Our high performance range includes:

- DynaDrill™ Rotary Hammers
- Cordless Tools
- Carbide Tipped Drill Bits
- Diamond Drilling & Cutting





DYNADRILL™ HAMMERS & BREAKERS

Rotary & Demolition Hammers

DD529 DynaDrill™ 2kg Combi Hammer



Description

The Ramset™ DynaDrill™ 529 Combi Hammer is truly the class leading 2kg tool on the market. The tool of choice with its powerful motor, enhanced anti vibration and the versatility of the quick change chuck system.

Specification

Voltage	240V
Power Input	850w
Rated Speed	0-1300rpm
Impact Rate	0-5100bpm
Impact Force (Max)	3.2J
Maximum Drill Diameters	
Concrete	28mm
Masonry (using Core Bit)	68mm
Steel	13mm
Wood	30mm
Optimum Drilling Size in Concrete	8-16mm
Weight	3.1Kg
Tool Holder	SDS Plus



✓ Features & Benefits

- Powerful 850W motor.
- Class leading drilling rates and chisel performance.
- Substantially improved vibration reduction.
- Rotating brush plate for same power in.
- Forward or reverse mode.
- Rotation stop for chiselling.
- Quick change chuck system.

Trades & Applications

	Builder	Plumber	Electrician
Drilling into concrete	✓	✓	✓
Removing Tiles (light chiseling)	✓	✓	
Core Cutting	✓	✓	✓

Product Codes & Specifications

Item Code	Power	Impact Force	Max Drill Dia	Vibration	Carbide
DD529	850W	3.2J	28mm	11 m/s ²	R3 Plus U3 Plus

DYNADRILL™ HAMMERS & BREAKERS

Rotary & Demolition Hammers

DD544 DynaDrill™ 4kg Combi Hammer



Description

The Ramset™ DynaDrill™ 544 is a class leading 4kg combi hammer drill in terms of performance and vibration reduction mechanisms. A robust and ergonomic design makes it the ideal tool for volume drilling in concrete, light picking and chiselling.

Specification

Voltage	240V
Power Input	900w
Rated Speed	0-760rpm
Impact Rate	0-3600bpm
Impact Force (Max)	4.2J
Maximum Drill Diameters	
Concrete	32mm
Masonry (using Core Bit)	90mm
Steel	13mm
Wood	30mm
Optimum Drilling Size in Concrete	14-25mm

Product Codes & Specifications

Item Code	Power	Impact Force	Max Drill Dia	Vibration	Carbide
DD544	900W	4.2J	32mm	10 m/s ²	R3 Plus U3 Plus



✓ Features & Benefits

- Vibration damping mechanism for super smooth operation.
- Quick lock keyless bit exchange.
- Reverse switch.
- Electro pneumatic impact mechanism.
- In-built safety clutch providing operator protection should a drill bit jam.
- Soft grip, back and side handle for safe and fatigue free operations.
- Finger tip control for point start accuracy with variable speed adjustment.
- Sealed lubrication system for extended service intervals.

DYNADRILL™ HAMMERS & BREAKERS

Rotary & Demolition Hammers

DD566 DynaDrill™ 6kg Combi Hammer



Description

The Ramset™ DynaDrill™ 566 is a powerful and versatile Combi-Hammer designed to get through the toughest jobs with ease. The DD566 incorporates many new and innovative technologies such as vibration and rotation control which make the tool more comfortable and safer for the operator. This is the ideal tool for those that require high productivity and lifetime from a large Combi-Hammer.

Specification

Voltage	240V
Power Input	1100w
Rated Speed	0-520rpm
Impact Rate	0-3,000bpm
Impact Force (Max)	6.5J
Maximum Drill Diameters:	
Concrete	45 mm
Masonry (using Core Bit)	125 mm
Optimum Drilling Size in Concrete	18-38mm
Chiselling Positions	16
Weight	6.8Kg
Tool Holder	U3™ & R3™ Max
Cable Length	4m

Product Codes & Specifications

Item Code	Power	Impact Force	Max Drill Dia	Vibration	Carbide
DD566	1100W	6.5J	45mm	8.2 m/s ²	U3 & R3 Max

Features & Benefits

- Powerful and robust 1100W Combi Hammer provides extended tool lifetime under the toughest working conditions.
- Vibration damping systems built into the tool holder, rear and auxiliary handles deliver exceptionally low vibration values for a tool in this class.
- New rotation control system stops the tool immediately upon the drill bit jamming providing the highest level of safety for the operator.
- New one hand chuck system.
- High removal rates, exceptional power to weight ratio.
- An ergonomically designed and well balanced tool.
- Horizontal and vertical drilling level gauge for accurate drilling.
- Power LED indicator and service LED indicator.

Trades & Applications

	Builder	Plumber	Electrician
Drilling into concrete	✓	✓	✓
Removing Tiles (light chiseling)	✓	✓	
Core Cutting	✓	✓	✓

DYNADRILL™ HAMMERS & BREAKERS

Rotary & Demolition Hammers

DD585 DynaDrill™ 8kg Combi Hammer

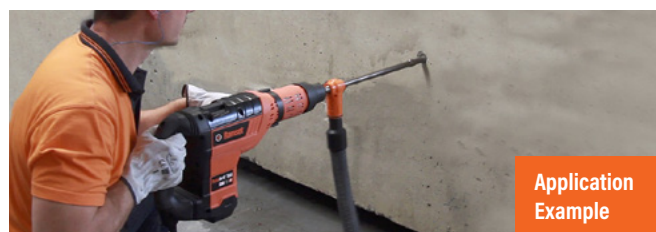


Description

The Ramset™ DynaDrill™ 585 is our largest ever Combi-Hammer at 8kg. Robustly designed for large diameter drilling and chiselling in concrete. It's high performance drilling rate and three way anti-vibration systems ensure it is one of the most productive and safest tools on the worksite.

Specification

Voltage	240V
Power Input	1500W
Rated Speed	0 - 305rpm
Impact Rate	1,380 - 2,760bpm
Impact Force (Max)	12.5J
Maximum Drill Diameters	
Concrete	45 mm
Masonry (using Core Bit)	125 mm
Optimum Drilling Size in Concrete	20-40mm
Machine Weight	8.9kg
Chiselling Positions	12
Tool Holder	U3™ & R3™ Max
Cable Length	4m



Application Example

Trades & Applications

	Builder	Plumber	Electrician
Drilling into concrete	✓	✓	✓
Chiseling/Breaking	✓	✓	
Core Cutting	✓	✓	✓

✓ Features & Benefits

- 1500W motor with 12.5J of impact energy delivers the best possible drilling and chiselling performance.
- Turbo function utilises the power which is normally used in drilling mode for chiselling.
- RVC Anti-Vibration Systems include a de-coupled main handle, a mass damper and anti-vibration impact mechanism.
- Auto Lock-On function increases operator comfort while chiselling.

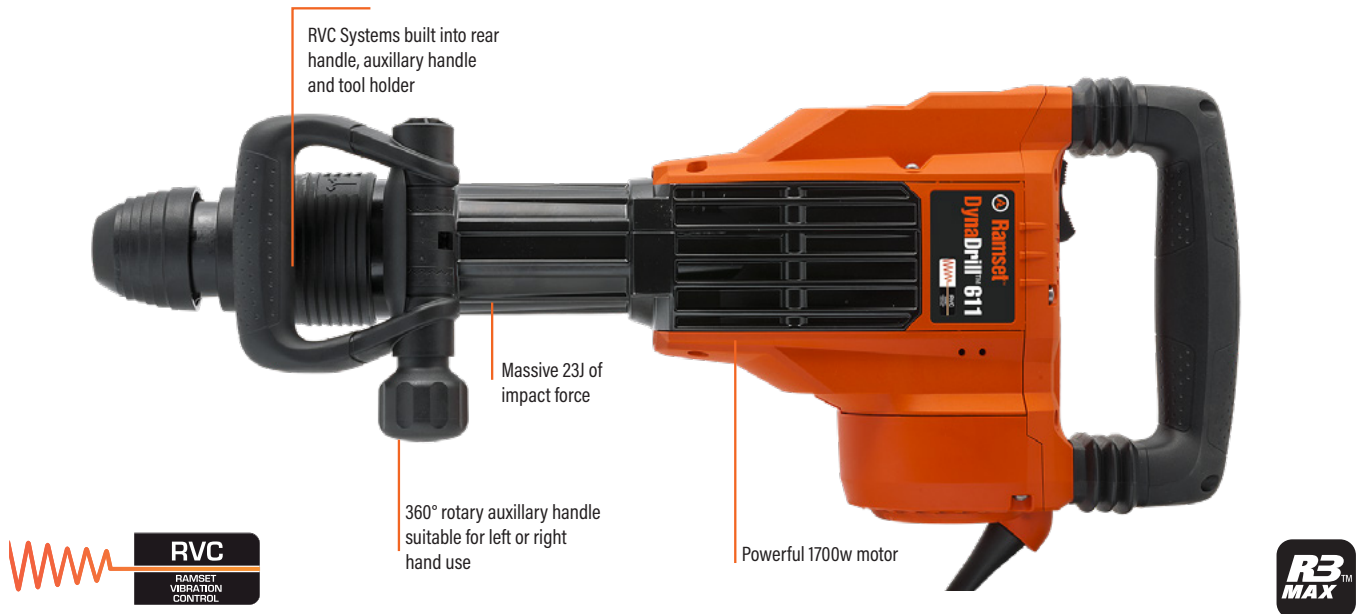
Product Codes & Specifications

Item Code	Power	Impact Force	Max Drill Dia	Vibration	Carbide
DD585	1500W	12.5J	45mm	8.0 m/s ²	U3 & R3 Max

DYNADRILL™ HAMMERS & BREAKERS

Rotary & Demolition Hammers

DD611 DynaDrill™ 11kg Demolition Hammer



Description

The Ramset™ DynaDrill™ 611 is the new in-line 11kg demolition hammer. With its powerful motor and high impact energy it has one of the best performance to weight ratios in its class. Its all new in-line design makes it ideal for heavy duty demolition jobs.

Specification

Voltage	240V
Power Input	1700w
Impact Rate	900-1,700bpm
Impact Force (Max)	23J
Chiselling Positions	12
Weight	11.4Kg
Tool Holder	R3™ Max
Cable Length	4m

Trades & Applications

	Builder	Plumber	Electrician
Concrete Breaking	✓	✓	✓



✓ Features & Benefits

- High performance to weight ratio with 1700W motor and 23J of impact energy.
- In-line design optimizes the tools centre of gravity making it ideal for downward demolition applications.
- Ramset™ Vibration Control (RVC) controls vibration levels to only 8m/s².
- Adjustable impact force to match base material.
- Vario-Lock mechanism for adjusting the chisel angle into one of 12 different positions.

Product Codes & Specifications

Item Code	Power	Impact Force	Max Drill Dia	Vibration	Carbide
DD611	1700W	23J	12	8.0 m/s²	R3 Max

DYNADRILL™ HAMMERS & BREAKERS

Carbide Drill Bits And Chisels

U3™ Plus Tri-Cutter Carbide Tipped Drill Bits

Item Code	Diameter (mm)	Work Length (mm) x Total length (mm)	Pack Qty
DDU305050	5	50 x 110	1
DDU305100	5	100 x 160	1
DDU306050	6	50 x 110	1
DDU306100	6	100 x 160	1
DDU306150	6	150 x 210	1
DDU306100X3	1/4"	100 x 160	1
DDU308100	8	100 x 160	1
DDU308150	8	150 x 210	1
DDU310100	10	100 x 160	1
DDU310200	10	200 x 260	1
DDU312150	12	150 x 210	1
DDU312250	12	250 x 310	1
DDU313200	13	200 x 250	1
DDU314200	14	200 x 250	1
DDU316200	16	200 x 250	1



R3™ Plus Carbide Tipped Drill Bits

Item Code	Diameter (mm)	Work Length (mm) x Total length (mm)	Pack Qty
DDR305050	5	50 x 110	1
DDR305100	5	100 x 160	1
DDR305125X5	5.5	150 x 210	1
DDR306050	6	50 x 110	1
DDR306100	6	100 x 160	1
DDR306150	6	150 x 210	1
DDR306050X3	1/4"	50 x 110	1
DDR306100X3	1/4"	100 x 160	1
DDR306150X3	1/4"	150 x 210	1
DDR308065	8	100 x 160	1
DDR308150	8	150 x 210	1
DDR310100	10	100 x 160	1
DDR310180	10	200 x 260	1
DDR312125	12	150 x 210	1
DDR312250	12	250 x 310	1
DDR312400	12	400 x 460	1
DDR312125X7	1/2	150 x 210	1
DDR314200	14	200 x 250	1
DDR315150	15	150 x 200	1
DDR316125	16	150 x 200	1
DDR316200	16	200 x 250	1
DDR316400	16	400 x 450	1



DYNADRILL™ HAMMERS & BREAKERS

Carbide Drill Bits And Chisels

R3™ Plus Y-Cutter Carbide Tipped Drill Bits

Item Code	Diameter (mm)	Work Length (mm) x Total length (mm)	Pack Qty
DQR318200	18	200 x 250	1
DQR318400	18	400 x 460	1
DQR319250	19	250 x 310	1
DQR320200	20	200 x 250	1
DQR320400	20	400 x 450	1
DQR322200	22	200 x 250	1
DQR322400	22	400 x 450	1
DQR324200	24	200 x 250	1
DQR324400	24	400 x 450	1
DQR325400	25	400 x 450	1
DQR326200	26	250 x 300	1
DQR326400	26	400 x 450	1



D3™ Plus Dust-Extracting Carbide Tipped Drill

Item Code	Diameter (mm)	Work Length (mm) x Total length (mm)	Pack Qty
DDER12200	12	200 x 320	1
DDER14250	14	250 x 370	1
DDER16250	16	250 x 370	1
DDER18250	18	250 x 370	1
DDER20250	20	250 x 370	1
DDER24250	24	250 x 370	1

For use with RV1632M Wet/Dry Vacuum



DYNADRILL™ HAMMERS & BREAKERS

Carbide Drill Bits And Chisels

R3™ Max Carbide Tipped Drill Bits

Item Code	Diameter (mm)	Work Length (mm) x Total length (mm)	Pack Qty
DDYM18200	18	200 x 340	1
DDYM18400	18	400 x 540	1
DDYM18600	18	600 x 740	1
DDYM20200	20	200 x 320	1
DDYM20400	20	400 x 520	1
DDYM20800	20	800 x 920	1
DDYM22200	22	200 x 320	1
DDYM22400	22	400 x 520	1
DDYM22800	22	800 x 920	1
DDYM24200	24	200 x 320	1
DDYM24400	24	400 x 520	1
DDYM25400	25	400 x 520	1
DDYM25800	25	800 x 920	1
DDYM26400	26	400 x 520	1
DDYM28400	28	400 x 520	1
DDYM28800	28	800 x 920	1
DDYM30400	30	400 x 520	1
DDYM32400	32	400 x 520	1
DDYM32800	32	800 x 920	1
DDYM35400	35	400 x 520	1
DDYM38400	38	400 x 520	1
DDYM40400	40	400 x 520	1



U3™ Max Tri-Cutter Carbide Tipped Drill Bits

Item Code	Diameter (mm)	Work Length (mm) x Total length (mm)	Pack Qty
DUM12200	12	200 x 340	1
DDUM12400	12	400 x 540	1
DDUM14200	14	200 x 340	1
DDUM14400	14	400 x 540	1
DDUM16200	16	200 x 340	1
DDUM16400	16	400 x 540	1



DYNADRILL™ HAMMERS & BREAKERS

Carbide Drill Bits And Chisels

D3™ Max Dust-Extracting Carbide Tipped Drill Bits

Item Code	Diameter (mm)	Work Length ^(mm) x Total length ^(mm)	Pack Qty
DDEM14400	14	400 x 600	1
DDEM16400	16	400 x 600	1
DDEM18400	18	400 x 600	1
DDEM20400	20	400 x 600	1
DDEM22400	22	400 x 600	1
DDEM25400	25	400 x 600	1
DDEM28400	28	400 x 600	1
DDEM30400	30	400 x 600	1
DDEM32400	32	400 x 600	1
DDEM35400	35	400 x 600	1

For use with RV1632M Wet/Dry Vacuum



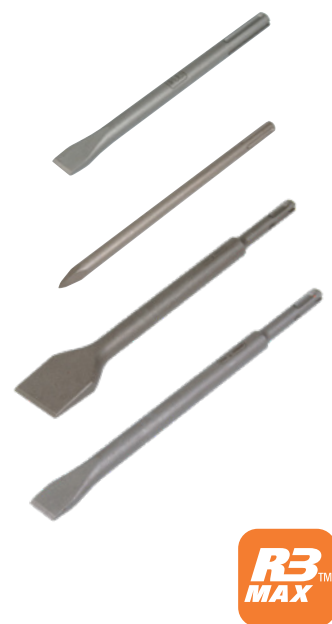
R3™ Chisels

R3™ PLUS CHISEL

Item Code	Total Length (mm)	Type	Pack Qty
DHR3PCS	250	Point	1
DHR3FCS	250	20 mm Flat	1
DHR3SC040	250	40 mm Spade	1

R3™ MAX CHISEL

Item Code	Total Length (mm)	Type	Pack Qty
DHSMPCM	400	R Drive Short Point Chisel	1
DHSMFCM	400	25mm Medium Flat Chisel	1
DHSMFCL	600	25mm Long Flat Chisel	1
DHSMSC050	400	50mm Spade Chisel	1
DHSMSC080	300	80mm Spade Chisel	1
DHSMSC115	300	115mm Spade Chisel	1



DYNADRILL™ HAMMERS & BREAKERS

Accessories

DynaDrill™ Accessories

Item Code	Description	Pack Qty
054288	Quick Fit Keyless Chuck For DD529, DD533 and DD544 Combi Hammer	1
DAR3DH	Chuck Adaptor - R3 Plus	1



DIAMOND DRILLING AND CUTTING RANGE

Diamond Drilling Machines

Diamond Core Drilling Kit 2000w

Description

A fully integrated diamond drilling system, the RM160KIT is supplied complete with a drilling motor, drilling rig and connection accessories, in a robust, double walled and easy to handle rigid tool case.

✓ Features & Benefits

- Powerful 2000W motor that can be hand held or rig mounted.
- Suitable for ½" BSP & 1¼" UNC core bit connections.
- Robust drilling rig suitable for drilling up to 200mm diameter.
- Sturdy rotomolded plastic and stainless steel tool case.
- Solid recessed wheels for ease of transportation to and from the jobsite.
- Integrated transport and carrying handles.
- Molded lid enables nesting of multiple cases to prevent sliding during transportation.



Specification

Voltage	240w		
Power Input	2000w		
Connection	½" BSP and 1¼" UNC		
Motor Speeds	Speed 1	Speed 2	Speed 3
Load	0-660rpm	0-1550rpm	0-3300rpm
Diameter	65-131mm	35-60mm	10-30mm
Rig Compatibility	TRIX160		
Cable Length	5m		
Weight	5.9kg		

✓ Trades & Applications

Applications	Plumber	Electrician	HVAC
Core Cutting	✓	✓	✓

Product Codes

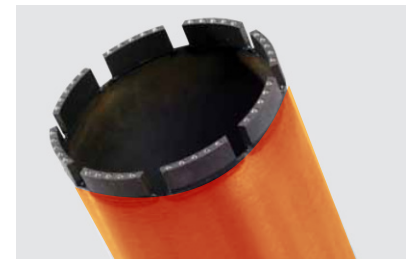
Item Code	Description	Pack Qty
RM160KIT	Diamond Core Drilling Kit	1
RM160	Drilling Motor 2000W (Only)	1

DIAMOND DRILLING AND CUTTING RANGE

Diamond Drilling Core Bits

Ramset™ Diamond Cores - Wet

Item Code	Length (mm)	Diameter (mm)	Pack Qty
1/2" BSP Thread			
DCWS014400	400	14	1
DCWS016400	400	16	1
DCWS018400	400	18	1
DCWS020400	400	20	1
DCWS024400	400	24	1
DCWS026400	400	26	1
DCWS032400	400	32	1
DCWS035400	400	35	1
DCWS040400	400	40	1
1 1/4" UNC			
DCWL067450	450	67	1
DCWL077450	450	77	1
DCWL082450	450	82	1
DCWL092450	450	92	1
DCWL102450	450	102	1
DCWL117450	450	117	1
DCWL122450	450	122	1
DCWL125450	450	125	1
DCWL132450	450	132	1
DCWL142450	450	142	1
DCWL152450	450	152	1



Description

Ramset™ Diamond Cores use industrial grade diamond, which is the hardest material on earth. They are ground down into very small pieces and mixed with a metallic paste called the bond. This is what holds the diamonds in place and forms the segments or the teeth of the core bit.

Diamonds within the segments are very brittle and break several times before wearing away, this breaking constantly exposes new sharp cutting edges and it is these edges that cut the material.

DIAMOND DRILLING AND CUTTING RANGE

Diamond Dry Cutting Machines

Wall Chaser

Description

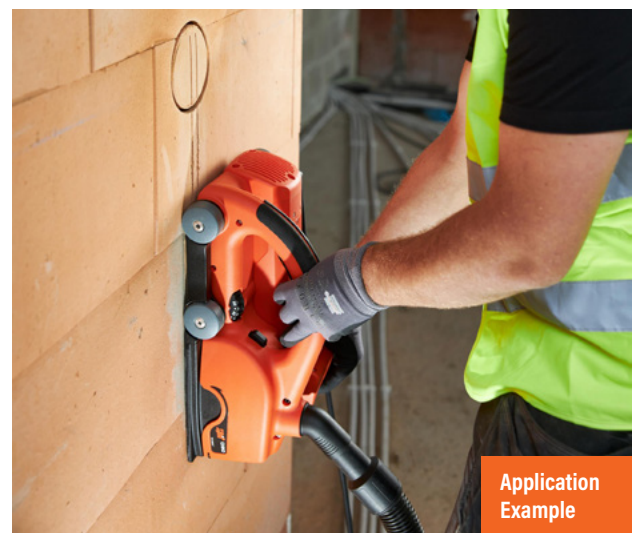
Fast and dust free concrete chaser with 2500 watts of power. Ideal for concealment of conduit or wires, adjustable from 2.6mm to 46.5mm wide and 50mm deep. Two 150mm concrete cutting blades included.

✓ Features & Benefits

- Quick blade fixing and removal.
- Variable width and depth of the cut - 150mm.
- Safe ergonomic design.
- Soft start motor.
- Secure concrete face contact for straight cut.
- Close to edge operation.
- Constructed for optimum dust extraction.

Specification

Voltage	240 Volt
Power Input	2500 Watt
Disc Diameter	150mm
Groove Depth	0-50mm
Groove Width	2.6 - 46.5mm
Weight According to EPTA	6.5kg
Concrete blades included	



✓ Trades & Applications

Applications	Plumber	Electrician	HVAC	Builder
Concrete wall chasing	✓	✓	✓	✓

Product Codes

Item Code	Description	Pack Qty
RW150ES	Concrete Chaser 2500W	1

DIAMOND DRILLING AND CUTTING RANGE

Vacuum Cleaners

Vacuum Cleaner Class-M 35 Litre

Description

Industrial quality Class-M vacuum cleaner for jobsite dust and water extraction. Automatic electromagnetic pulse system cleans the filters without interrupting the air flow intake, making this unit ideal for dustless concrete drilling and cutting. Traps 99.9% of dust under 2 microns in size.

✓ Features & Benefits

- Class-M rating for drilling & cutting concrete.
- Powerful 1600W motor provides industrial quality cleaning.
- High speed (35,000rpm) turbine.
- 17% higher air flow & 8% higher vacuum (280mbar).
- Removes 99.9% of concrete dust under 2 micron size.
- Electromagnetic pulse filter cleaning system.
- Polyester filters provide longer life.
- All accessories included.



✓ Trades & Applications

Applications	Plumber	Electrician	HVAC	Builder
Core cutting dust extraction	✓	✓	✓	
Wall chasing dust extraction				
Angle Grinder dust extraction	✓		✓	✓

Product Codes & Specifications

Item Code	Description	Power	Max. Airflow	Max. Water Column Depression	Pack Qty
RV1632M	35L Class M Vacuum	1600W	75 L/S	280 mbar	1

Accessories

620911	PE Vacuum Dust Bags				5
620922	Dust Bags (Pack of 3)				1
644004	5m antistatic hose				1
423159	2 sets polyester filters				1
644030	Accessory Kit				1

DIAMOND DRILLING AND CUTTING RANGE

Diamond Drilling Accessories

Vacuum Sets

Description

A vacuum set including seals and pressure gauge for use with the TRIX series drilling rigs. When used in conjunction with the vacuum pump the rigs can be located and secured on a surface via suction rather than hold down anchors.



Item Code	Description	Pack Qty
624025	Vacuum Set for TRIX160 Rig	1

Core Drill Extensions

Description

Extensions for core drills.



Item Code	Description	Pack Qty
622020	Extension Rod 1/2" x 300mm	1

Copper Rings

Description

Set of 5 copper rings to suit 1 1/4" drive core drills to prevent seizure



Item Code	Description	Pack Qty
172770	Kit with 5 Copper Rings	1

DIAMOND DRILLING AND CUTTING RANGE

Diamond Drilling Accessories

Quick Release Bolts

Description

M12 for fixing into DynaSet™ drop in anchors to secure drill rigs.

Item Code	Description	Pack Qty
622220	Quick Release Connector Bolts	1



Diamond Cutting Blades

Description

Blades are suited to most general cutting applications and have a large operating range for multi surface use.

Item Code	Diameter (mm)	Description	Pack Qty
GC127LS	125	Diamond Blade 125mm Segmented	1
GC152TS	150	Diamond Blade 150mm Turbo	2
GC127TS	125	Diamond Blade 125mm Turbo	1



Cut Off Wheels

Item Code	Diameter (mm)	Description	Pack Qty
CW125SU	125 x 1.0	Cutoff Wheel-Steel INOX	25



CORDLESS POWER TOOLS

18V Lithium-Ion Cordless Range

18V Cordless Rotary Hammer



Description

A powerful new brushless 18V Cordless DynaDrill™ Rotary Hammer delivers exceptional concrete drilling performance.

Specification

Battery Pack	18 V / 6.0 Ah
Battery Type	Li-Ion
Rated Speed	0 - 890 rpm
Impact Rate (Full-load)	0 - 4350 bpm
Impact Energy	2.6 J
Maximum Drill Diameters Concrete	26 mm
Masonry (Using Core Bit)	68 mm
Steel	13 mm
Wood	30 mm
Optimum Drilling Diameter - Concrete	8-16 mm
Tool Holder	SDS-Plus
Weight incl. Battery	3.6 kg

Features & Benefits

Powerful rotary hammer with the flexibility of a quick-change chuck system.

- New brushless motor with electronic protection delivers corded performance.
- Delivers 2.6J of impact energy for superior drilling and chiselling performance.
- Equipped with kickback control for improved operator safety.
- Electronic precision control for better tool handling.
- Enhanced anti-vibration system provides maximum operator comfort.
- This versatile tool provides rotary hammer, hammer only and rotary only functions.
- Large capacity 18V 6.0Ah battery pack delivers superior run time.

Rotary Hammer

Part No	Description	Order Qty
DD518	Brushless Rotary Hammer*	1
	18V Starter Kit	
CBBASEKIT18	2x Batteries CBBAT18, 1x Charger CBCHR18,	1 KIT

*Can be purchased as bare unit or as part of a kit.

CORDLESS POWER TOOLS

18V Lithium-Ion Cordless Range

18V Cordless Hammer Drill / Driver



Description

Cordless tool for high performance torque drilling, screw driving and percussion drilling.

Specification

Battery Pack	18 V / 6.0 Ah
Battery Type	Li-Ion
No Load Speed (1st gear / 2nd gear)	0 - 480 / 0 - 2100 rpm
Impact Rate	0 - 31500 bpm
Max. Drilling Capacity Steel / Wood / Masonry	13 / 82 / 16 mm
Torque Settings	25+1
Max Torque	75 Nm
Weight incl. Battery	2.8 kg



Features & Benefits

- New brushless motor delivers 75Nm of torque.
- Equipped with kickback control for improved operator safety.
- Robust 13mm full metal chuck.
- Electronic motor protection prevents overload damaging the tool.
- Integrated LED light for working in dark spaces.

Hammer Drill Driver

Part No	Description	Order Qty
CBHDD18	Brushless Hammer Drill Driver*	1
CBBASEKIT18	18V Starter Kit 2x Batteries CBBAT18, 1x Charger CBCHR18,	1 KIT

*Can be purchased as bare unit or as part of a kit.

CORDLESS POWER TOOLS

18V Lithium-Ion Cordless Range

18V Cordless Angle Grinder



Description

Brushless 5" cordless angle grinder ideal for a variety of cutting and finishing jobs on the building site.

Specification

Battery Pack	18 V / 6.0 Ah
Battery Type	Li-Ion
Rated Speed	9000 rpm
Max Disc Diameter	125 mm
Spindle Size	M14
Handle Positions	3
Weight incl. Battery	2.8 kg

Angle Grinder

Part No	Description	Order Qty
CBAGR18	Brushless Angle Grinder*	1
CBASEKIT18	18V Starter Kit 2x Batteries CBBAT18, 1x Charger CBCHR18,	1 KIT

*Can be purchased as bare unit or as part of a kit.

Features & Benefits

- New brushless motor delivers benchmark angle grinder performance.
- Electronic Motor Protection prevents tool overload and ensures long life.
- Tool is equipped with kickback stop, fast brake and restart protection for operator safety.
- Soft start motor with more power & longer runtime.
- Auxiliary handle can be used on right or left of tool.
- Adjustable anti-rotation protective guard.

Noise / Vibration Information

Sound pressure level:	79dB (A)
Sound power level:	90dB (A)

Surface Grinding

Vibration emission value ah	6.0 m/s ²
Uncertainty K	1.5 m/s ²

Disk Sanding

Vibration emission value ah	3.5 m/s ²
Uncertainty K	1.5 m/s ²

CORDLESS POWER TOOLS

18V Lithium-Ion Cordless Range

18V Brushless Impact Driver/Wrench



Description

The Ramset™ brushless 2 in 1 impact driver/ wrench combination tool delivers incredible versatility on the job site.

Specification

Battery Pack	18 V / 6.0 Ah
Battery Type	Li-Ion
No Load Speed	0 - 1300 rpm / 0 - 2000 rpm / 0 - 2800 rpm
Impact Rate	0 - 1100 rpm / 0 - 2600 rpm / 0 - 3200 rpm
Bit Retention	1/4" Hexagon & 1/2" Square
Torque	170/185 Nm
Weight incl. Battery	1.9 kg

Impact Driver/Wrench

Part No	Description	Order Qty
CBIDW18	Brushless Impact Driver/Wrench*	1
	18V Starter Kit	
CBBASEKIT18	2x Batteries CBBAT18, 1x Charger CBCHR18,	1 KIT

*Can be purchased as bare unit or as part of a kit.

✓ Features & Benefits

Impact driver combined with Impact Wrench in the same tool!

- Unique bit holder combines 1/4" hexagon & 1/2" square for the most versatile impact tool on the jobsite.
- New brushless motor delivering high torque from a compact tool design.
- Best power to weight performance in its class.
- 3 LED lights for working in dark spaces.
- 3 different power settings for working with different applications & materials.
- Advanced motor delivers long tool lifetime and higher efficiency per battery charge.

Noise / Vibration Information

Sound pressure level:	95dB (A)
Sound power level:	106dB (A)
Impact tightening of fasteners	
Vibration emission value ah	13.5 m/s ²
Uncertainty K	1.5 m/s ²

Wear ear and eye protection.

CORDLESS POWER TOOLS

18V Lithium-Ion Cordless Range

18V Cordless ChemSet™ Applicator



A18
Lithium Ion

Description

The powerful Ramset™ R18 Lithium Ion applicator is ideal for effortless dispensing of all Ramset™ chemical injection products.

380ml, 600ml & 750ml cartridge capacity. RE0502™ PLUS, ChemSet™ 801 XC2 Xtrem™, ChemSet™ 101 PLUS

Specification

Battery Pack	18 V / 5.0 Ah
Battery Type	Li-Ion
Maximum Dispensing Rate	0 - 533ml/min.
Dispensing Force	430kg
Cartridge Capacity	380ml, 600ml & 750ml
Weight incl. Battery	3.64kg

✓ Features & Benefits

- Variable speed trigger for enhanced control.
- Anti-drip mechanism instantly stops material dripping upon trigger release.
- Adjustable speed control.
- Robust, all metal gear system.
- Class leading dispensing performance.

Note: Compatible with Milwaukee 18V battery range

Applicator

Part No	Description	Order Qty
CUAR18	18V Powered Applicator	1 TOOL

CORDLESS POWER TOOLS

18V Lithium-Ion Cordless Range

18V Brushless Starter Kit



Description

18V battery & charger starter kit to support brushless range of cordless power tools.

✓ Features & Benefits

- 20% increase in runtime over 5.0Ah batteries.
- Battery fuel gauge LED's light up showing how much charge is left.
- Suits all 18V brushless tools.
- Fast battery charger.
- Air cooling for longer lifetime of the batteries.

Charger & Battery

Part No	Description	Order Qty
CBBAT18	18V 6.0Ah Battery	1
CBCHR18	18V Charger	1
CBBASEKIT18	18V Base Kit 2x Batteries CBBAT18, 1x Charger CBCHR18,	1 KIT
CKITBAG	18V Tool Kit Bag	1

CORDLESS POWER TOOLS

18V Lithium-Ion Cordless Range

18V HEPA Dust Extraction Box

Description

The CBDBX18 is the optimum cordless dust management system for use with the DynaDrill™ 518 Brushless Rotary Hammer. It features a HEPA filter for optimised dust collection, removing 99.97% of dust particles larger than 0.3 micrometers.

✓ Features & Benefits

- Features a HEPA filter for optimal dust collection, removes 99.97% of dust particles larger than 0.3 microns.
- Auto power function turns on when drilling and shuts off two seconds after releasing the drill trigger
- Functions include auto power, bit target and a dust capacity indicator.



✓ Trades & Applications

Applications	Plumber	Electrician
Drilling into concrete	✓	✓
Masonry drilling	✓	✓

Product Codes & Specifications

Part No.	Power Supply	Power Source
CBDBX18	18V	6.0Ah Li-Ion

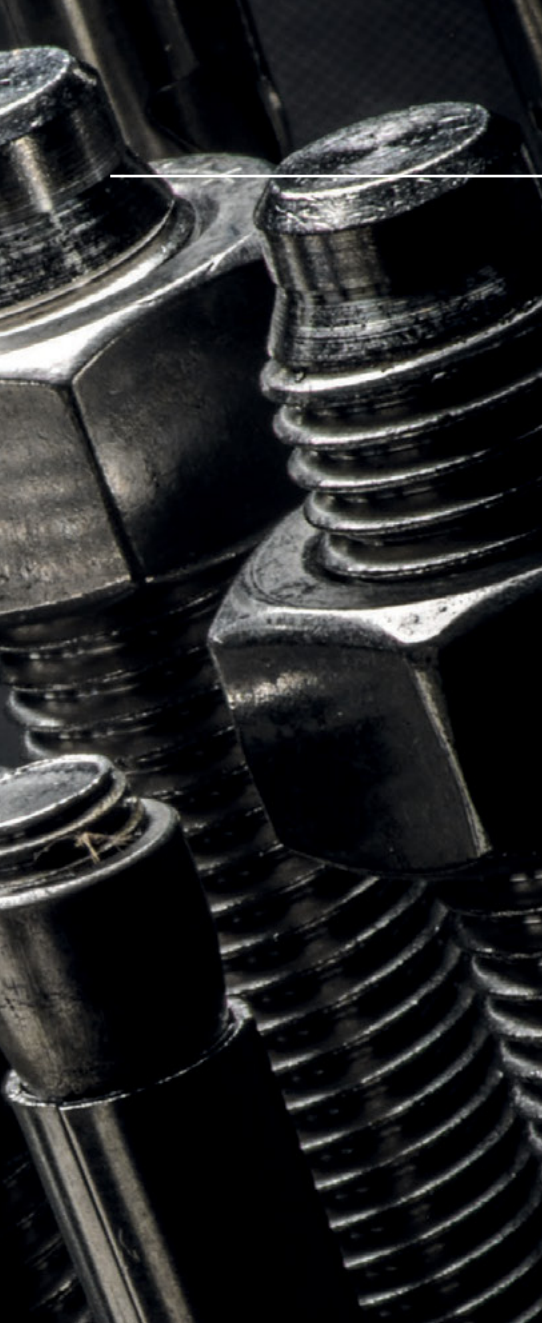


Mechanical Anchoring

Ramset™ Mechanical Anchors are manufactured to our high quality standards to ensure maximum confidence the product is fit for purpose and will meet the designers load requirements.

The Ramset™ Mechanical Anchoring range consists of:

- Xtrem™ Seismic Anchors
- Boa™ Coil Expansion Anchor
- TruBolt™ Stud Anchors
- AnkaScrew™ Screw In Anchors
- DynaBolt™ Sleeve Anchors
- TruFast™ Push Pull Suspension Anchor
- DynaSet™ Drop-In Anchor
- Electrical and Plumbing Fixture Suspension Anchors



HEAVY DUTY ANCHORS

XTREM™ Anchoring For Design Specification

Performance Icons



SpaTec™ Xtrem™ Safety Anchors

Description

The SpaTec™ Xtrem™ Safety Anchor is a heavy duty, torque controlled expansion anchor, with an integrated pull-down section, designed for high performance in both static and dynamic load applications, in both cracked and non-cracked concrete and for C1 & C2 seismic applications. The SpaTec™ Xtrem™ is ideally suited for through fixing into concrete when security and reliability are paramount.

✓ Features & Benefits

- The combination of a high tensile class 8.8 bolt with an extra thick-walled spacer allows a smaller diameter bolt to be used for easier installation while still providing both excellent tensile and shear performance. The spacer also incorporates a visual maximum fixture thickness indicator for ease of use.
- The patented anti-rotation expansion sleeve is designed with sharp angled protrusions that grip the sides of the hole, preventing anchor rotation during installation.



✓ Trades & Applications

Applications	Steel Fabricator	Maintenance Fitter	Plumbing Contractor	Electrical Contractor	Construction Contractor	Elevator Installer
Anchoring structural steel column/beams	✓					
Anchoring HVAC units			✓	✓		
Machinery hold down		✓				
Anchoring crane rails					✓	
Anchoring elevator guide rails						✓

Product Codes & Specifications

Material	Item Code	Thread Size (mm)	Anchor Length (mm)	Depth of drill hole, h ₁ (mm)	Drilled Hole Dia ø (mm)	Fixture Hole Ø (mm)	Max Torque (Nm)	Pack Qty
●	SP10105	M10	105	90	15	17	50	25
●	SP12105	M12	105	105	18	20	80	25
●	SP12120	M12	120	105	18	20	80	25
◆	SP12120SS**	M12	120	105	18	20	80	25
●	SP16145	M16	145	131	24	26	120	10
●	SP20170	M20	170	157	28	30	200	5

● Carbon Steel Zinc Plated

◆ Stainless Steel 316

◆ Galvanised

**Special Order

HEAVY DUTY ANCHORS

XTREM™ Anchoring For Design Specification

Performance Icons



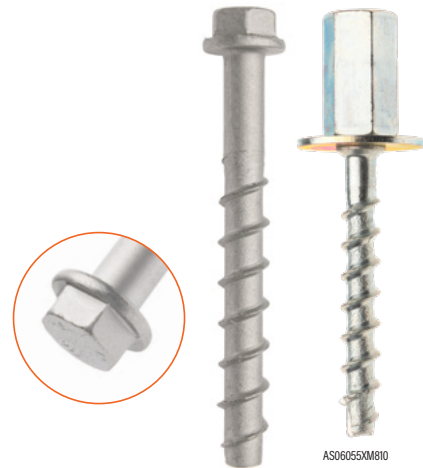
AnkaScrew™ Xtrem™ Safety Anchors

Description

Ramset's AnkaScrew™ Xtrem™ is a ETA certified, seismic and fire rated heavy duty screw-in anchor. This removable anchor is well suited to close-to-edge or close-to-anchor fixing as it does not expand and burst the surrounding substrate.

✓ Features & Benefits

- The AnkaScrew™ Xtrem™ is ideal for close-to-edge and close-to-anchor installation as its self-tapping, rotation setting method of installation is subject to low expansion pressure, therefore does not burst the substrate.
- For concrete, hollow core, brick & block (solid & hollow).
- The AnkaScrew™ Xtrem™ thread design provides clearance for rapid removal of material and reduces jamming.
- The AnkaScrew™ Xtrem™ is 100% removable.



AS06055XM810

✓ Trades & Applications



Seismic



Fire Rated



ETA

XTREM
PERMANENT ANCHORING

Applications	Carpenter	Construction Contractor	Racking Installer	Formworker
Steel Framing	✓	✓		
Bottom plates	✓			✓
Hand rails	✓	✓		✓
Pallet racking			✓	
General Anchoring	✓	✓	✓	✓

Product Codes & Specifications

Material	Part No.	Anchor Size (mm)	Max Fixture Thickness (mm)	Anchor Length (mm)	Drilled Hole Ø (mm)	Fixture Hole Ø (mm)	Min Hole Depth (mm)	Socket Size (mm)	Order Qty
●	AS06080X	6	40	80	6	8	45	13	100
●	AS08060X	8	15	60	8	12	55	13	100
●	AS08080X	8	35	80	8	12	55	13	100
●	AS10060X*	10	5	60	10	14	65	15	50
●	AS10100X*	10	45	100	10	14	65	15	50
●	AS12110X*	12	45	110	12	16	75	17	25
●	AS12150X*	12	85	150	12	16	75	17	25
●	AS06055XM810	6	10	55	6	8	45	13	50

● Carbon Steel Zinc Plated

◆ Stainless Steel 316

◆ Galvanised

**Special Order

HEAVY DUTY ANCHORS

XTREM™ Anchoring For Design Specification

Performance Icons



TruBolt™ Xtrem™ Stud Anchors

Description

The Ramset™ TruBolt™ Xtrem™ is a C1 & C2 seismic certified heavy duty, torque controlled expansion anchor for permanent anchoring in a wide range of structural and non-structural applications in concrete. ETA Certified to seismic C1 & C2 applications, meets AS 5216 and NZS 3101 pre-qualification requirements.

✓ Features & Benefits

- The TruBolt™ Xtrem™ diameter equals the required hole diameter providing maximum shear capacity for hole size and making drill bit selection simple.
- The anchor design ensures maximum expansion of the sleeve and pull-down on the fixture. These actions are both further assisted by the application of load.



Seismic



Fire Rated



✓ Trades & Applications

Applications	Steel Fabricator	Construction Contractor	HVAC	Seating Contractor	Fire & Security	Electrician
Anchoring structural steel column/beams	✓					
Facade Installation		✓				
Curtain Wall installation		✓				
Pipe suspension			✓			
Sprinkler pipe services					✓	
Stadium seating				✓		
Pipe & cable tray installation						✓

Product Codes & Specifications

Material	Item Code	Thread Size	Anchor Length (mm)	Max Fixture Thickness (mm)	Drilled Hole Ø (mm)	Min Hole Depth (mm)	Max Torque (Nm)	Fixture Hole Ø (mm)	Pack Qty
●	T08075X	M8	75	15	8	60	20	9	100
●	T10085X	M10	85	5	10	80	45	12	50
●	T10100X	M10	100	20	10	80	45	12	25
●	T10120X	M10	120	40	10	80	45	12	25
●	T12105X	M12	105	10	12	95	60	14	25
●	T12115X	M12	115	20	12	95	60	14	25
●	T12135X	M12	135	40	12	95	60	14	25
●	T12180X	M12	180	85	12	95	60	14	20
●	T16145X	M16	145	25	16	120	110	18	10
●	T16170X	M16	170	50	16	120	110	18	10
●	T20170X	M20	170	30	20	140	160	22	10
●	T20200X	M20	200	60	20	140	160	22	10

● Carbon Steel Zinc Plated

◆ Stainless Steel 316

◆ Galvanised

HEAVY DUTY ANCHORS

High Load Applications

Performance Icons



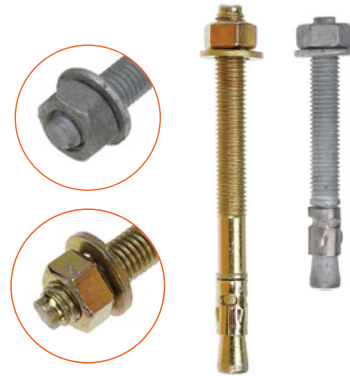
TruBolt™ Stud Anchors

Description

The TruBolt™ Stud Anchor is a true-to-size, heavy duty, torque controlled expansion anchor, for permanent anchoring into concrete.

✓ Features & Benefits

- The TruBolt™ diameter equals the required hole diameter providing maximum shear capacity for hole size and making drill bit selection simple. Its cold forged construction ensures superior strength and reliability.



✓ Trades & Applications

Applications	Steel Fabricator	Elevator Installer	Construction Contractor	Seating Contractor	Racking Installer
Handrails, balustrades & safety barriers	✓				
Anchoring elevator guide rails		✓	✓		
Anchoring structural steel column/beams	✓				
Stadium seating				✓	
Pallet racking					✓

Product Codes & Specifications

Material	Item Code	Thread Size	Anchor Length (mm)	Drilled Hole Ø (mm)	Max Fixture Thickness (mm)	Fixture Hole Ø (mm)	Min Hole Depth (mm)	Effective Length (mm)	Pack Qty
●	T12080	M12	80	12	6	15	90	58	20
■	T12080GH	M12	80	12	6	15	90	58	20
●	T12100	M12	100	12	25	15	105	71	20
■	T12100GH	M12	100	12	25	15	105	71	20
●	T12120	M12	120	12	45	15	105	93	20
●	T12140	M12	140	12	65	15	105	111	20
■	T12140GH	M12	140	12	65	15	105	111	20
■	T12180GH	M12	180	12	100	15	125	151	20
●	T16110	M16	110	16	8	19	125	67	20
■	T16110GH	M16	110	16	8	19	125	67	20
●	T16125	M16	125	16	20	19	135	85	20
■	T16125GH	M16	125	16	20	19	135	85	20
●	T16150	M16	150	16	45	19	145	110	20
■	T16150GH	M16	150	16	45	19	145	110	20
●	T16175	M16	175	16	70	19	145	135	20
■	T16175GH	M16	175	16	70	19	145	135	20
●	T20140	M20	140	20	10	24	160	85	10
■	T20140GH	M20	140	20	10	24	160	85	10
●	T20160	M20	160	20	35	24	170	115	10
■	T20160GH	M20	160	20	35	24	170	115	10
●	T20215	M20	215	20	90	24	200	170	10
■	T20215GH	M20	215	20	90	24	200	170	10

● Carbon Steel Zinc Plated

◆ Stainless Steel 316

◆ Galvanised

HEAVY DUTY ANCHORS

High Load Applications

Performance Icons



TruBolt™ Stud Anchors Stainless Steel

Description

The TruBolt™ Stud Anchor is a true-to-size, heavy duty, torque controlled expansion anchor, for permanent anchoring into concrete.

✓ Features & Benefits

- The TruBolt™ diameter equals the required hole diameter providing maximum shear capacity for hole size and making drill bit selection simple. Its cold forged construction ensures superior strength and reliability.



✓ Trades & Applications

Applications	Steel Fabricator	Elevator Installer	Construction Contractor	Seating Contractor	Racking Installer
Handrails, balustrades & safety barriers	✓				
Anchoring elevator guide rails		✓	✓		
Anchoring structural steel column/beams	✓				
Stadium seating				✓	
Pallet racking					✓

Product Codes & Specifications

Material	Item Code	Thread Diameter	Drill Diameter	Total anchor length	Hole depth minus fixture thickness	Minimum Drilling depth	Maximum fixture thickness	Maximum tightening Torque	Pack Qty
◆	T06055SSA	ø6	ø6	55mm	70mm	65mm	15mm	20Nm	100
◆	T08055SSA	ø8	ø8	55mm	70mm	65mm	5mm	20Nm	100
◆	T08070SSA	ø8	ø8	70mm	85mm	65mm	20mm	20Nm	100
◆	T08090SSA	ø8	ø8	90mm	105mm	65mm	40mm	20Nm	50
◆	T08130SSA	ø8	ø8	130mm	145mm	65mm	80mm	20Nm	50
◆	T10065SSA	ø10	ø10	65mm	83mm	78mm	5mm	35Nm	50
◆	T10075SSA	ø10	ø10	75mm	93mm	78mm	15mm	35Nm	50
◆	T10095SSA	ø10	ø10	95mm	113mm	78mm	35mm	35Nm	50
◆	T10120SSA	ø10	ø10	120mm	138mm	78mm	60mm	35Nm	25
◆	T12080SSA	ø12	ø12	80mm	100mm	95mm	5mm	50Nm	25
◆	T12100SSA	ø12	ø12	100mm	120mm	95mm	25mm	50Nm	25
◆	T12115SSA	ø12	ø12	115mm	135mm	95mm	40mm	50Nm	25
◆	T12140SSA	ø12	ø12	140mm	160mm	95mm	65mm	50Nm	25
◆	T16125SSA	ø16	ø16	125mm	147mm	117mm	30mm	100Nm	25
◆	T16150SSA	ø16	ø16	150mm	172mm	117mm	55mm	100Nm	10
◆	T16170SSA	ø16	ø16	170mm	192mm	117mm	75mm	100Nm	10

● Carbon Steel Zinc Plated

◆ Stainless Steel 316

◆ Galvanised

HEAVY DUTY ANCHORS

High Load Applications

Performance Icons



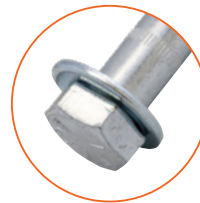
Boa™ Coil Expansion Anchors

Description

The Boa™ Coil Expansion Anchor is a removable, high strength, heavy duty, rotation setting expansion anchor for concrete. The Boa™ is ideally suited for tough fixing into concrete when cast-in performance or clean removal is required.

✓ Features & Benefits

- High load capacity is achieved due to the expansion coil locking into the sides of the hole, when set, to give cast-in type performance.
- High clamping load and resistance to cyclic loading result from the pulldown effect achieved through the rotation setting action of the anchor.
- Low profile hex head provides a neat finish.
- Removal is easy, clean and fast, as the expansion coil stays in the hole leaving no protruding metal parts to grind off. The bolt can even be reused with a new coil.



✓ Trades & Applications

Applications	Steel Fabricator	Formworker	Scaffold Contractor	Maintenance Fitter
Handrails, balustrades & safety barriers	✓			
Formwork support		✓		
Scaffold support			✓	
Anchoring structural steel column/beams	✓			
Machinery hold down				✓

Product Codes & Specifications

Item Code	Anchor Size	Anchor Length (mm)	Pack Qty
● BAC08075	1/2"/13 mm	75	50
● BAC08100	1/2"/13 mm	100	25
● BAC10090	5/8"/16 mm	90	25
● BAC10125	5/8"/16 mm	125	25
● BAC12115	3/4"/19 mm	115	10



Boa™ Coil ANCHORS - COIL ONLY

Item Code	Anchor Size	Pack Qty
● BAC08	1/2"/13 mm	100
● BAC10	5/8"/16 mm	100
● BAC12	3/4"/19 mm	50

● Carbon Steel Zinc Plated

◆ Stainless Steel 316

◆ Galvanised

MEDIUM DUTY ANCHORS

Medium Load Applications

Performance Icons



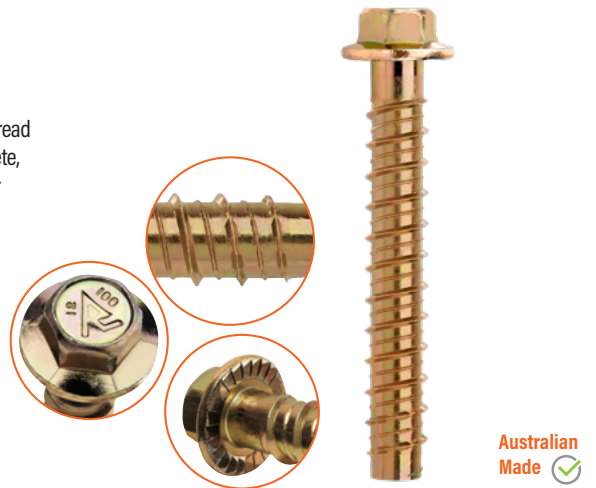
WERCS™ AnkaScrew™ Anchors

Description

The WERCS AnkaScrew™ Screw-In Anchor is a totally removable, medium duty, rotation setting, thread forming anchor, ideal for either temporary or permanent anchoring into substrates such as concrete, brick, hollow brick or block. The WERCS AnkaScrew™ is particularly well suited to close-to-edge or close-to-anchor fixing as it does not expand and burst the surrounding substrate.

✓ Features & Benefits

- High thread engagement increases clamp force and holding capacity over a wide range of loading.
- The WERCS AnkaScrew™ is ideal for close-to-edge and close-to-anchor installation as its self-tapping, rotation setting method of installation is subject to low expansion pressure, therefore does not burst the substrate.
- For concrete, brick & block (solid & hollow).


WERCS™

Product Codes & Specifications

Material	Item Code	Thread Size	Anchor Length (mm)	Drilled Hole Ø (mm)	Max Fixture Thickness (mm)	Fixture Hole Ø (mm)	Socket Size (mm)	Pack Qty
●	AS06050W	6	50	6	20	8	10	50
◆	AS06050WGM	6	50	6	20	8	10	50
●	AS06075W	6	75	6	45	8	10	50
◆	AS06075WGM	6	75	6	45	8	10	50
●	AS06100W	6	100	6	70	8	10	50
◆	AS06100WGM	6	100	6	70	8	10	50
●	AS08060W	8	60	8	20	10	13	50
◆	AS08060WGM	8	60	8	20	10	13	50
●	AS08075W	8	75	8	35	10	13	50
◆	AS08075WGM	8	75	8	35	10	13	50
●	AS08100W	8	100	8	60	10	13	50
◆	AS08100WGM	8	100	8	60	10	13	50
●	AS10060W	10	60	10	10	13	15	25
◆	AS10060WGM	10	60	10	10	13	15	25
●	AS10075W	10	75	10	25	13	15	25
◆	AS10075WGM	10	75	10	25	13	15	25
●	AS10100W	10	100	10	50	13	15	25
◆	AS10100WGM	10	100	10	50	13	15	25
●	AS12075W	12	75	12	15	15	16	25
◆	AS12075WGM	12	75	12	15	15	16	25
●	AS12100W	12	100	12	40	15	16	20
◆	AS12100WGM	12	100	12	40	15	16	20
●	AS12150W	12	150	12	90	15	16	20
◆	AS12150WGM	12	150	12	90	15	16	20

● Carbon Steel Zinc Plated

◆ Stainless Steel 316

◆ Galvanised

MEDIUM DUTY ANCHORS

Medium Load Applications

Performance Icons



AnkaScrew™ Screw-in Anchors

Description

The AnkaScrew™ Screw-In Anchor is a totally removable, medium duty, rotation setting, thread forming anchor, ideal for either temporary or permanent anchoring into substrates such as concrete, brick, hollow brick or block. The AnkaScrew™ is particularly well suited to close-to-edge or close-to-anchor fixing as it does not expand and burst the surrounding substrate.

✓ Features & Benefits

- Fast and easy to install as it simply screws into a pre-drilled hole.
- The AnkaScrew™ is even faster and easier to remove. It simply screws out leaving an empty hole with no protruding metal parts to grind off.
- The AnkaScrew™ is ideal for close-to-edge and close-to-anchor installation as its self-tapping, rotation setting method of installation is not subject to any expansion pressure, therefore does not burst the substrate.



✓ Trades & Applications

Applications	Carpenter	Construction Contractor	Racking Installer	Formworker
Bottom plates	✓			
Temporary hand rails/safety barriers		✓		
Pallet racking			✓	
Formwork support				✓

Product Codes & Specifications

Material	Item Code	Anchor Size (mm) x Anchor Length (mm)	Head Type	Pack Qty
●	AS05030	5 x 30	Flanged Hex Head (Zinc plate)	100
●	AS16115	16 x 115	Flanged Hex Head (Zinc plate)	10
●	AS16160	16 x 160	Flanged Hex Head (Zinc plate)	10

● Carbon Steel Zinc Plated

◆ Stainless Steel 316

◆ Galvanised

MEDIUM DUTY ANCHORS

Medium Load Applications

Performance Icons



DynaBolt™ Plus Sleeve Anchors Hex Bolt

Description

The DynaBolt™ Plus Sleeve Anchor is a medium duty, torque setting expansion anchor. Patented sleeve crushes to close gaps up to 5 mm and pulls down to induce clamp load.

✓ Features & Benefits

- The DynaBolt™ Plus patented expansion sleeve closes gaps of up to 5mm, pulling down on the fixture to induce clamp load and provide improved security.
- The DynaBolt™ Plus is a fully assembled through fixture anchor. Therefore, assembly, marking out and re-positioning of fixtures is eliminated making installation fast and easy.



✓ Trades & Applications

Applications	Carpenter	Construction Contractor	Window Installer	Racking Installer
Bottom plates	✓			
Hand rails		✓		
Window frames			✓	
Pallet racking				✓

Product Codes & Specifications

Material	Item Code	Thread Size	Anchor Length(mm)	Drilled Hole Ø (mm)	Max Fixture Thickness (mm)	Fixture Hole Ø (mm)	Pack Qty
●	DP08045H	M6	45	8	15	10	100
◆	DP08045HSS	M6	45	8	15	10	100
●	DP10045H	M8	45	10	8	12	50
◆	DP10045HSS	M8	45	10	8	12	50
●	DP10055H	M8	55	10	20	12	50
◆	DP10060HSS	M8	60	10	20	12	50
●	DP10080H	M8	80	10	30	12	50
◆	DP10080HSS	M8	80	10	30	12	50
◆	DP10105HSS	M8	105	10	60	12	25

● Carbon Steel Zinc Plated

◆ Stainless Steel 316

◆ Galvanised

Medium Load Applications

Performance Icons



DynaBolt™ Plus Sleeve Anchors Hex Nut

Description

The DynaBolt™ Plus Sleeve Anchor is a medium duty, torque setting expansion anchor. Patented sleeve crushes to close gaps up to 5mm and pulls down to induce clamp load.

Features & Benefits

- The DynaBolt™ Plus patented expansion sleeve closes gaps of up to 5mm, pulling down on the fixture to induce clamp load and provide improved security.
- The DynaBolt™ Plus is a fully assembled through fixture anchor. Therefore, assembly, marking out and re-positioning of fixtures is eliminated making installation fast and easy.



Product Codes & Specifications

Material	Item Code	Thread Size	Anchor Length(mm)	Drilled Hole Ø (mm)	Max Fixture Thickness (mm)	Fixture Hole Ø (mm)	Pack Qty
●	D6026	M4.5	26	6	3	8	100
●	DP06040	M4.5	38	6	12	8	100
◆	DP06040SS	M4.5	38	6	12	8	100
●	DP06060	M4.5	57	6	30	8	100
◆	DP06060SS	M4.5	57	6	30	8	100
●	DP08040	M6	40	8	6	10	100
◆	DP08040SS	M6	40	8	6	10	100
●	DP08065	M6	66	8	25	10	50
◆	DP08065SS	M6	66	8	25	10	50
●	DP08090	M6	92	8	50	10	50
●	DP10040	M8	41	10	3	12	50
■	DP10040GH	M8	41	10	3	12	50
●	DP10050	M8	49	10	20	12	50
■	DP10050GH	M8	49	10	20	12	50
◆	DP10050SS	M8	49	10	20	12	50
●	DP10075	M8	76	10	30	12	50
■	DP10075GH	M8	76	10	30	12	50
◆	DP10075SS	M8	76	10	30	12	50
●	DP10100	M8	103	10	50	12	25
■	DP10100GH	M8	103	10	50	12	25
◆	DP10100SS	M8	103	10	50	12	25
●	DP10125	M8	124	10	80	12	25
●	DP12060	M10	55	12	10	15	25
■	DP12060GH	M10	55	12	10	15	25
◆	DP12060SS	M10	55	12	10	15	25
●	DP12070	M10	70	12	15	15	25
■	DP12070GH	M10	70	12	15	15	25
◆	DP12070SS	M10	70	12	15	15	25
●	DP12100	M10	98	12	45	15	20
■	DP12100GH	M10	98	12	45	15	20
◆	DP12100SS	M10	98	12	45	15	20
●	DP12125	M10	126	12	70	15	20
■	DP12125GH	M10	126	12	70	15	20
●	DP16065	M12	62	16	6	19	20
■	DP16065GH	M12	62	16	6	19	20
●	DP16110	M12	106	16	35	19	10
■	DP16110GH	M12	106	16	35	19	10
●	DP16140	M12	140	16	65	19	10
■	DP16140GH	M12	140	16	65	19	10
●	DP20080	M16	81	20	8	24	10
●	DP20115	M16	113	20	25	24	5
●	DP20160	M16	157	20	70	24	5

● Carbon Steel Zinc Plated

◆ Stainless Steel 316

◆ Galvanised

Medium Load Applications

Performance Icons



DynaBolt™ Plus Sleeve Anchors Flat Head

Description

The DynaBolt™ Plus Sleeve Anchor is a medium duty, torque setting expansion anchor. Patented sleeve crushes to close gaps up to 5mm and pulls down to induce clamp load.

✓ Features & Benefits

- The DynaBolt™ Plus patented expansion sleeve closes gaps of up to 5mm, pulling down on the fixture to induce clamp load and provide improved security.
- The DynaBolt™ Plus is a fully assembled through fixture anchor. Therefore, assembly, marking out and re-positioning of fixtures is eliminated making installation fast and easy.



✓ Trades & Applications

Applications	Carpenter	Construction Contractor	Window Installer	Racking Installer
Bottom plates	✓			
Hand rails		✓		
Window frames			✓	
Pallet racking				✓

Product Codes & Specifications

Material	Item Code	Thread Size	Anchor Length(mm)	Drilled Hole Ø (mm)	Max Fixture Thickness (mm)	Fixture Hole Ø (mm)	Pack Qty
●	D6034F	M4.5	34	6	10	8	100
●	DP06060F	M4.5	60	6	30	8	100
◆	DP06060FSS	M4.5	60	6	30	8	100
●	DP06075F	M4.5	75	6	45	8	100
●	DP06100F	M4.5	100	6	70	8	100
●	DP08060F	M6	60	8	20	10	100
●	DP08085F	M6	85	8	45	10	50
●	DP10075F	M8	75	10	30	12	50
●	DP10100F	M8	100	10	55	12	50
●	DP10125F	M8	125	10	80	12	25

● Carbon Steel Zinc Plated

◆ Stainless Steel 316

◆ Galvanised

MEDIUM DUTY ANCHORS

Medium Load Applications

Performance Icons



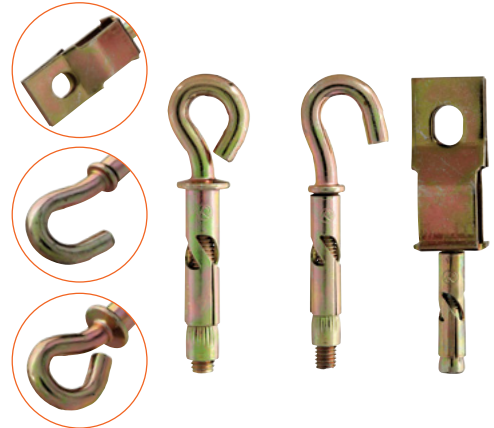
DynaBolt™ Plus

Description

The DynaBolt™ Plus Sleeve Anchor is a medium duty, torque setting expansion anchor. Patented sleeve crushes to close gaps up to 5 mm and pulls down to induce clamp load.

✓ Features & Benefits

- The DynaBolt™ Plus patented expansion sleeve closes gaps of up to 5mm, pulling down on the fixture to induce clamp load and provide improved security.
- The DynaBolt™ Plus is a fully assembled through fixture anchor. Therefore, assembly, marking out and re-positioning of fixtures is eliminated making installation fast and easy.



✓ Trades & Applications

Applications	Carpenter	Construction Contractor	Window Installer	Racking Installer
Bottom plates	✓			
Hand rails		✓		
Window frames			✓	
Pallet racking				✓

Product Codes & Specifications

Material	Item Code	Bolt Style	Thread Size	Anchor Length (mm)	Drilled Hole Ø (mm)	Pack Qty
●	D06026S	Set Lok	M4.5	26	6	500
●	D08045K	Hook Bolt	M6	47	8	100
●	D08045X	Eye Bolt	M6	47	8	100

● Carbon Steel Zinc Plated

◆ Stainless Steel 316

◆ Galvanised

Medium Load Applications

Performance Icons



DynaBolt™ Decorative Post Heads

Description

DynaBolt™ countersunk head can be fitted to the Hex Nut DynaBolt™ to provide an alternate finish. The DynaBolt™ Plus Sleeve Anchor is a medium duty, torque setting expansion anchor.



✓ Features & Benefits

- DynaBolt™ Decorative Post Heads provide added flexibility to DynaBolt™ Plus Sleeve Anchors, providing a stainless steel counter sunk head style application.

✓ Trades & Applications

Applications	Carpenter	Window Installer	Ceiling & Partitioning Contractor
Hand rails	✓		
Window frames		✓	

Product Codes & Specifications

Material	Item Code	Head Style	Thread Size	Overall Length (mm)	Pack Qty
◆	DF045SS	Countersunk	M4.5	23	100
◆	DF06SS	Countersunk	M6	23	100
◆	DF08SS	Countersunk	M8	27	100

● Carbon Steel Zinc Plated

◆ Stainless Steel 316

◆ Galvanised

MEDIUM DUTY ANCHORS

Medium Load Applications

Performance Icons



DynaSet™ Drop-in Anchors

Description

The DynaSet™ Drop-In Anchor is an all steel, medium duty, displacement setting, expansion anchor designed to provide a permanent anchorage point in concrete. Its internal thread allows it to be used with both machine bolts and threaded rod, placing no restrictions on fixture thickness. The DynaSet™ requires the use of the correct setting tool to ensure full expansion of the anchor body. The setting tool also acts as visual check for correct setting of the anchor.



Product Codes & Specifications

Material	Part No.	Thread Size	Thread Length (mm)	Anchor Length (mm)	Drilled Hole Ø (mm)	Min Hole Depth (mm)	Setting Tool	Order Qty
●	DSM08	M8	13	30	10	33	SETDS2	100
●	DSM10	M10	16	40	12	43	SETDS3	50
●	DSM12	M12	21	50	16	53	SETDS4	50
●	DSM16	M16	28	65	20	68	SETDS5	25
●	DSM20	M20	35	80	25	83	SETDS6	25
●	DSF10	M10	14	30	12	33	SETDF3	100
●	DSF12	M12	21	50	16	53	SETDS4	50
◆	DSM08SS	13	M8	30	10	33	SETDS2	100
◆	DSM10SS	16	M10	40	12	43	SETDS3	50
◆	DSM12SS	21	M12	50	15	53	SETDS4	50
◆	DSM16SS	28	M16	60	20	68	SETDS5	25

Kitset Code

Item Code	Description	Pack Qty
RAP01	Elect. Mech. Services Pk(500 x DSF10 + set tool)	500

DynaSet™ SETTING TOOLS

Item Code	To Suit Dynaset	Pack Qty
SETDS2	DSM08/DSM08SS	1
SETDF3	DSF10	1
SETDS3	DSM10/DSM10SS	1
SETDS4	DSM12/DSM12SS	1
SETDS5	DSM16/DSM16SS	1
SETDS6	DSM20	1



● Carbon Steel Zinc Plated

◆ Stainless Steel 316

◆ Galvanised

LIGHT DUTY ANCHORS

Light Load Applications

Performance Icons



TruFast™ Push-Pull Anchors

Description

The TruFast™ Push-Pull Suspension Anchor is an all metal, tie wire, load assisted expansion anchor designed for fixing suspended ceiling cables to concrete soffits.

✓ Features & Benefits

- The TruFast™ Push-Pull Suspension Anchor's body diameter equals the hole diameter providing maximum shear capacity for hole size. Its cold forged construction ensures superior strength and reliability.
- The anchor design ensures maximum expansion of the sleeve. This action is further assisted by the application of load -ideal for a suspension anchor.



✓ Trades & Applications

Applications	Ceiling & Partitioning Contractor
Suspended ceiling	✓

Product Codes & Specifications

Material	Item Code	Anchor Size (mm)	Anchor Length (mm)	Pack Qty
●	TFE06	6	55	100
●	TFE06120	6	120	100

● Carbon Steel Zinc Plated

◆ Stainless Steel 316

◆ Galvanised

LIGHT DUTY ANCHORS

Light Load Applications

Performance Icons



ShureDrive™ Drive Anchors

Description

The ShureDrive™ Drive Anchor is an all metal light duty, impact setting, interference fit anchor, designed for tamper resistant use in a variety of substrates such as concrete, stone, solid brick, solid block, hollow brick, hollow block and hollow slab.

✓ Features & Benefits

- Hammer-in method makes installation quick and easy.
- Full expansion of the anchor is evident when the head of the expansion nail sits flush with the flange.
- Once fully set, the ShureDrive™ becomes tamper resistant.
- The anchor's large flange prevents pullout.
- Optional A4 316 stainless steel 6mm version.

Tamper resistant head and large flange to prevent pull out



Full expansion is evident when the head of the expansion nail sits flush with the flange

✓ Trades & Applications

Applications	Electrical Contractor	Signwriter	Plumbing Contractor	Bricklayer
Brick tie installation				✓
Sign installation		✓		
Pipe/conduit saddle installation	✓		✓	

Product Codes & Specifications

Material	Item Code	Anchor Size (mm)	Anchor Length (mm)	Pack Qty
●	SDM05022	5	22	100
●	SDM06030	6	30	100
◆	SDM06030SS	6	30	100
●	SDM06050	6	50	100

Note: The ShureDrive™ Drive Anchor should not be used for top fix or overhead applications

Application Example



● Carbon Steel Zinc Plated

◆ Stainless Steel 316

◆ Galvanised

LIGHT DUTY ANCHORS

Light Load Applications

Performance Icons



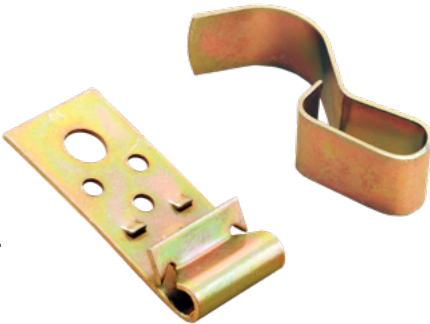
Ramset™ Vertical Flange Clip

Description

The Ramset™ Vertical Flange Clip features gripping barbs for a firm hold on the flange of the "C" purlin. The fire resistant DynaClip™ spring steel clip is quick and easy to attach to steel profiles.

✓ Features & Benefits

- The Ramset™ Vertical Flange Clip features gripping barbs for a firm hold on the flange of the "C" purlin.
- For suspended ceilings, angle trim may be bolted through the larger hole using M6 bolts.



✓ Trades & Applications

Applications	Electrical Contractor	Ceiling & Partitioning Contractor
Fixing electrical cable to steel purlins	✓	
Fixing lighting systems to steel purlins	✓	
Fixing suspended ceilings to steel purlins		✓

Product Codes & Specifications

Item Code	Capacity (mm)	Type	Pack Qty
CHLD	Cable bundles	Cable Holder + Anchor	50
DK20	16 - 20	Dynaclip	100
DK32	25 - 32	Dynaclip	100
VF1	1.6 - 2.5	Vertical Flange Clip	100

● Carbon Steel Zinc Plated

◆ Stainless Steel 316

◆ Galvanised

LIGHT DUTY ANCHORS

Light Load Applications

Performance Icons



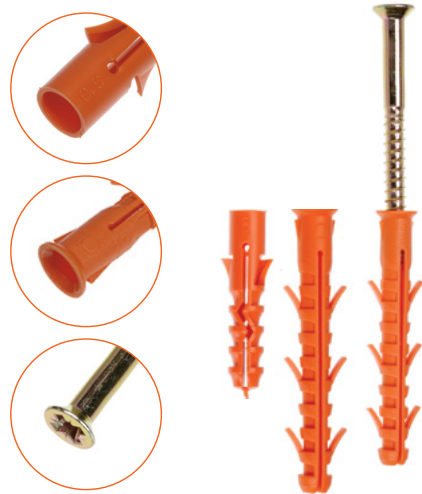
RamPlug™ Nylon Frame Anchor

Description

The RamPlug™ Nylon Frame Anchor is a light duty, rotation setting, interference fit anchor, designed for use in a variety of substrates such as concrete, stone, solid brick, hollow brick, solid block, hollow block, hollow slab block and lightweight concrete (AAC) block. Available in Standard, Long and Ultra Long, with (Ultra Long only) or without a countersunk or hex head screw, there is a RamPlug™ for a range of light duty anchoring applications.

✓ Features & Benefits

- Anti-rotation barbs prevent the anchor from rotating in the hole.
- Countersunk sleeve allows for flush finishing.
- Nylon sleeve reduces the effects of cold bridging, e.g. mold growth, when compared to all-metal anchors.



✓ Trades & Applications

Applications	Carpenter	Flooring Contractor	Garage Door Installer	Window/Door Installer
Anchoring wall/base plates & battens	✓	✓		
Fitting door & window frames	✓			✓
Fitting garage doors			✓	

RamPlug™ - STANDARD

Item Code	Anchor Size (mm)	Anchor Length (mm)	Pack Qty
DNP05	5	25	100
DNP06	6	30	100
DNP08	8	40	100
DNP10	10	50	50

RamPlug™ - LONG

Item Code	Anchor Size (mm)	Anchor Length (mm)	Pack Qty
DLP08	8	80	100
DLP10	10	80	50

RamPlug™ - ULTRA LONG

Item Code	Anchor Size (mm)	Anchor Length (mm)	Pack Qty
● DUP10080H	10	80	25
● DUP10100H	10	100	25
● DUP10135H	10	135	25

● Carbon Steel Zinc Plated

◆ Stainless Steel 316

◆ Galvanised

LIGHT DUTY ANCHORS

Light Load Applications

Performance Icons



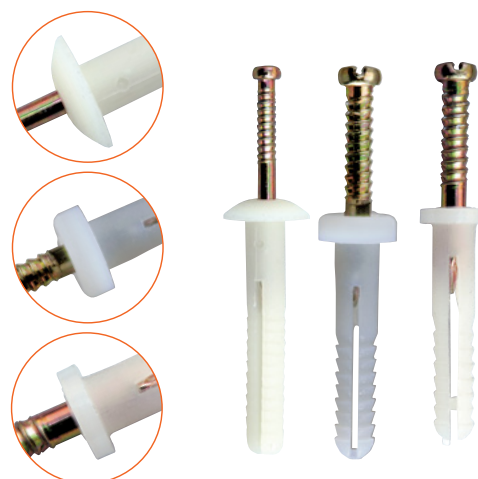
Nylon Anchor

Description

The Ramset™ Nylon Anchor is a removable light duty, impact/rotation setting, interference fit anchor, with a variety of head styles, designed for use in a variety of substrates such as concrete, stone, solid brick, solid block, grout filled block and hollow block

✓ Features & Benefits

- Available in multiple head styles for versatility.
- The drive screw's saw tooth thread makes it easy to drive and unscrew.
- Requires only small diameter holes for discreet fixing.



✓ Trades & Applications

Applications	Electrical Contractor	Signwriter	Plumbing Contractor
Electrical fitting installation	✓		
Sign installation		✓	
Pipe/Conduit Saddle installation	✓		✓

Product Codes & Specifications

Material	Item Code	Anchor Size (mm) x Anchor Length (mm)	Head Type	Pack Qty
●	TNM325	5 x 25	Mushroom	100
●	TNR325	5 x 25	Round	100
●	TNR338	5 x 38	Round	100
●	TNM425	6.5 x 25	Mushroom	100
●	TNR425	6.5 x 25	Round	100
●	TNM438	6.5 x 38	Mushroom	100
●	TNM450	6.5 x 50	Mushroom	100
●	TNM475	6.5 x 75	Mushroom	50

● Carbon Steel Zinc Plated

◆ Stainless Steel 316

◆ Galvanised

LIGHT DUTY ANCHORS

Light Load Applications

Performance Icons



EasyDrive™ Anchors

Description

The EasyDrive™ Nylon Drive Anchor is a removable light duty, impact/ rotation setting, interference fit anchor, designed for use in a variety of substrates such as concrete, stone, solid brick, solid block, hollow brick, hollow block and hollow slab.

✓ Features & Benefits

- The innovative design of the EasyDrive™ ensures that it can be hammered all the way into the hole without pre-expansion.
- The drive screw's saw tooth thread makes it easy to drive and unscrew.
- A wide, flat collar with collapsible sleeve design, ensures tight fixing.
- Nylon body provides insulation between drive screw and work surface.



✓ Trades & Applications

Applications	Electrical Contractor	Bricklayer	Plumbing Contractor
Electrical fitting installation	✓		
Brick Tie installation		✓	
Pipe/Conduit Saddle installation	✓		✓

Product Codes & Specifications

Material	Item Code	Anchor Size (mm)	Anchor Length (mm)	Pack Qty
●	ED05033	5	33	100
◆	ED05033SS	5	33	100
●	ED05050	5	50	100
●	ED06042	6	42	100
◆	ED06042SS	6	42	100
●	ED06055	6	55	100
◆	ED06055SS	6	55	100
●	ED06075	6	75	100
◆	ED06075SS	6	75	100

● Carbon Steel Zinc Plated

◆ Stainless Steel 316

◆ Galvanised

LIGHT DUTY ANCHORS

Light Load Applications

Performance Icons



Plastic Plugs (Frame Packs)

Description

Ramset™ wall plugs are tapered at one end for quick and easy insertion, suitable for 10-12 gauge screws in concrete, stone, solid brick and solid block.



Product Codes & Specifications

Item Code	Length (mm) x Drill Size (mm)	Colour	Pack Qty
WPGR25	25 x 7	Green	1000
WPGR38	38 x 7	Green	500
WPGR50	50 x 7	Green	500

● Carbon Steel Zinc Plated

◆ Stainless Steel 316

◆ Galvanised

LIGHT DUTY ANCHORS

Light Load Applications

Performance Icons



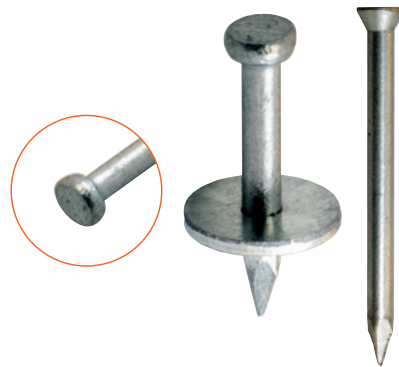
Concrete Nails

Description

Ramset™ concrete nails are manufactured from ductile, high strength carbon steel and are available in a number of different styles to suit a range of applications. They are designed for hand hammer driving into medium strength concrete and solid block. **Caution:** Always wear eye protection when setting concrete nails. Always strike the nail head squarely with the hammer face.

✓ Features & Benefits

- Manufactured from ductile, high strength material to avoid breakage.
- Available with pre-assembled washers to improve pullover strength.
- Available with either a plain or striated shank and in a range of different sizes and head styles.
- Ideal for use in surveying as a survey marker or locator.



✓ Trades & Applications

Applications	Carpenter	Signwriter	Plumbing Contractor	Electrical Contractor	Formworker
Timber batten installation	✓				
Sign installation		✓			
Pipe/Conduit Saddle installation			✓	✓	
Formwork support					✓

Product Codes & Specifications

Item Code	Description	Shank Ø (mm)	Overall Length (mm)	Order Qty
CW415Q500	Washed	2.4	15	500
CW420Q500	Washed	2.4	20	500
CW425Q500	Washed	2.4	25	500
CW430Q500	Washed	2.4	30	500

● Carbon Steel Zinc Plated

◆ Stainless Steel 316

◆ Galvanised

LIGHT DUTY ANCHORS

Light Load Applications

Performance Icons



Hollow Wall Anchors

Description

The Ramset™ Hollow Wall Anchor is an all metal, light duty, cavity fixing for plasterboard and other hollow wall materials up to 38mm.

✓ Features & Benefits

- The Hollow Wall Anchor's low profile head allows for flush finishing.
- The anchor's large flange prevents the head from pulling into the substrate.
- Anti-rotation barbs, prevent the anchor from spinning in the hole.
- Collapsing legs with an integral nut provide high strength and allow the screw to be removed without losing the anchor inside the cavity.



✓ Trades & Applications

Applications	Electrical Contractor	Signwriter	Plumbing Contractor
Electrical fitting installation	✓		
Sign installation		✓	
Pipe/Conduit Saddle installation	✓		✓

Product Codes & Specifications

Item Code	Thread Size	Wall Thickness (mm)	Pack Qty	Order Qty
HW05M4	M4	Up to 5	100	500
HW10M4	M4	6 - 10	100	500
HW13M4	M4	8 - 13	100	500
HW24M4	M4	16 - 24	100	500
HW14M5	M5	7 - 14	100	100
HW16M6	M6	6 - 16	100	100

Hollow Wall Anchor Setting Tool

Item Code	Description	Pack Qty
SETHWG	Hand Setting Tool - Gun	1



● Carbon Steel Zinc Plated

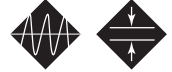
◆ Stainless Steel 316

◆ Galvanised

LIGHT DUTY ANCHORS

Light Load Applications

Performance Icons



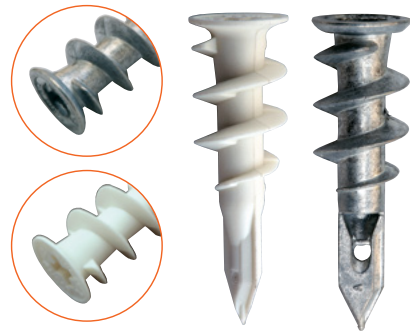
WallMate™ Plasterboard Anchors

Description

The WallMate™ is the original self drilling plasterboard anchor. Available in nylon or zinc, the WallMate™ would probably be the quickest and easiest plasterboard anchor to install and remove.

✓ Features & Benefits

- Both versions of the WallMate™ feature an effective drill point for easy penetration of plasterboard and fast installation. If a long screw is used, this point will break away so as not to restrict achievement of a firm fix.
- The anchor's screw thread profile is designed for efficient cutting and positive grip.
- Both the screw and the WallMate™ can be easily removed without losing the anchor inside the cavity.



✓ Trades & Applications

Applications	Miscellaneous Trades	Plumbing Contractor	Electrical Contractor
Light hook/bracket installation	✓		
Electrical fitting installation			✓
Bathroom accessory installation		✓	

Product Codes & Specifications

Item Code	Screw Gauge x Min. Screw Length (mm)	Wall Thickness (mm)	Pack Qty
WMZ	8 x 20	10 - 12	100
WM25	6 - 8 x 20	10 - 12	100

● Carbon Steel Zinc Plated

◆ Stainless Steel 316

◆ Galvanised

Chemset™ Chemical Anchoring

Ramset™ Chemical Anchors are approved for installation in challenging site conditions such as water immersion, to provide long term reliable service.

The Ramset™ Chemical Range Consists of:

- Epcon™ C8 Xtrem™ Seismic Performance Epoxy Anchor
- ChemSet™ 801 Xtrem™ new XC2
- ChemSet™ Reo502™ PLUS Epoxy Chemical Anchor
- ChemSet™ 801 Xtrem™ High Productivity Chemical Anchor
- ChemSet™ 101 PLUS Polyester Chemical Anchor
- ChemSet™ Anchor Studs
- Internal Threaded Anchor Inserts
- ChemSet™ Installation Accessories



ANCHORING ADHESIVES

Heavy Duty Anchoring

Performance Icons



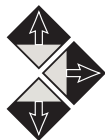
Reo502TM PLUS

Heavy Duty Epoxy Anchoring

- Fast, low fatigue dispensing.
- High performance pure epoxy.
- Versatile epoxy for dry, damp, wet and underwater applications.
- Dustless drilling.
- 100 Year Working Life.



Multi
Directional
Application



Compliance

AS 5216:
2021



Indicative
Bond Strength*



*Performance of cored & oversized holes was not included in the ETAG test program and therefore is based on testing conducted at ramsetreid Concrete Structures Laboratory.



100
YEAR
WORKING
LIFE



Fire Rated



Seismic

Dustless
Drilling

Description

Complying AS 5216:2021 and the National Construction Code (NCC) for use in cracked concrete and C1 & C2 seismic applications. REO502TM PLUS is designed for fast all weather dispensing, user friendly working times to maximise productivity. REO502TM PLUS is for structural reinforcing bar connections in slabs, columns, beams and walls, structural anchoring applications.

REO502TM PLUS is a heavy-duty pure epoxy for anchoring threaded studs and reinforcing bar into cracked & uncracked concrete.

Item Code	Description	Pack Qty
REO502P600	ChemSet™ Reo502™ PLUS (600ml)	9

ANCHORING ADHESIVES

Heavy Duty Anchoring

Performance Icons



ChemSet™ 801 Xtrem™ XC²

Heavy Duty Vinyl Ester Adhesive

- Seismic C1 & C2 rated
- Fast curing
- Cracked concrete.
- Fire rated.
- Flooded hole installation.
- Dustless drilling.
- 100 Year Working Life.



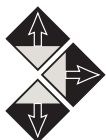
Fire Rated



Seismic



Dustless Drilling

Multi
Directional
Application

Compliance

Indicative
Bond Strength*

Description

ChemSet™ 801 Xtrem™ new XC² formulation is 33% stronger and is certified for seismic, flooded conditions and fire rated. ChemSet 801 Xtrem™ XC² meets the highest seismic standard (Category 2), when used to install the unique ChemSet™ Multicone Threaded Studs that compensate for cracks that open in the concrete under seismic action. Fast Setting ChemSet™ 801 Xtrem™ XC² is ideal for applications requiring fast assembly times such as structural steel, hand rails, balustrades, services, etc.

Item Code	Description	Pack Qty
C801X380	ChemSet™ 801 Xtrem™ XC2 (380ml)	12
C801X750	ChemSet™ 801 Xtrem™ XC2 (750ml)	9

ANCHORING ADHESIVES

Heavy Duty Anchoring

Performance Icons



EPCON™ C8 Xtrem™

EXTREME Epoxy Anchoring

- Seismic C1 & C2, cracked and uncracked concrete.
- Fire rated.
- Long working times.
- Dustless drilling.
- 100 Year Working Life.

Multi
Directional
Application

Compliance

Indicative
Bond Strength*

*Performance of cored & oversized holes was not included in the ETAG test program and therefore is based on testing conducted at Ramset™ Concrete Structures Laboratory.



Fire Rated



Seismic

Dustless
Drilling

Description

Independently tested and assessed for 100 Year Working Life under sustained loading means peace of mind for design engineers and building contractors alike. Versatile Epcon™ C8 Xtrem™ is suitable for extreme anchoring environments including seismic, cracked concrete, core drilled holes, oversized diameters, flooded conditions and underwater.

Epcon™ C8 is ideal for applications requiring the highest bond strength and security. Epcon™ C8 accommodates a wide range of climate conditions. It is easy to dispense in cold weather and its long working time is ideal for deep embedment or hot climates.

Item Code	Description	Pack Qty
C8-450	Epcon C8 Xtrem™	12

ANCHORING ADHESIVES

Polyester Adhesive

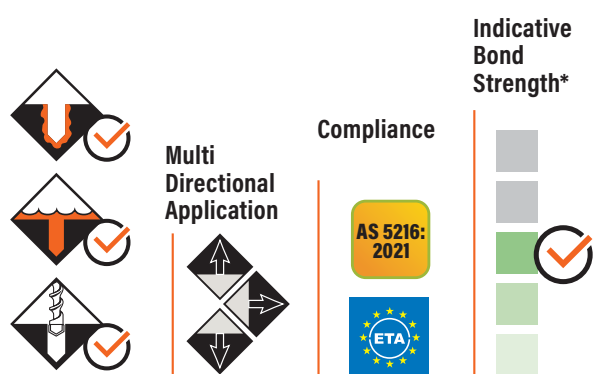
Performance Icons



CHEMSET™ 101 PLUS

Multi-Purpose Polyester Adhesive

Formulated using high performance, marine grade resin, which allows full load capacity in flooded holes to be attained as assessed to ETAG 001-5 Option 7.



Description

Not just any polyester; The Ramset™ ChemSet™ 101 PLUS is formulated using high performance, marine grade polyester resin. The European Technical Approval Certification provides peace of mind that ChemSet™ 101 PLUS will deliver what it promises: high quality, consistent load capacity, even in flooded holes.

Item Code	Description	Pack Qty
C101C	ChemSet™ 101 PLUS Cartridge (380ml)	12
C101J	ChemSet™ 101 PLUS Jumbo (750ml)	9
ISKP	ChemSet 101 PLUS Cartridge (380ml x 2)	2

ANCHORING ADHESIVES

Polyester Adhesive

Performance Icons



UltraFix™ PLUS

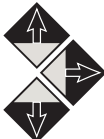
Multi-Purpose Polyester Adhesive

Fits standard silicone caulking gun.
Great for small jobs or around the home.

- Steel fencing, gates, brackets, hinges, guard rails, hand rails and more.



Multi
Directional
Application



Compliance



Indicative
Bond
Strength*



Description

The Ramset™ UltraFix™ PLUS is a general purpose, fast setting marine grade polyester in a convenient caulking cartridge suitable for standard caulking guns.

UltraFix™ PLUS is certified for anchoring threaded rod and bar into solid concrete and hollow masonry.

Ideal for general anchoring of steel and timber fixtures to concrete and hollow masonry.

Item Code	Description	Pack Qty
UFP300P	UltraFix™ PLUS (300ml)	12

ANCHORING ADHESIVES

ChemSet™ CAPSULES

Performance Icons



ChemSet™ Maxima™ Anchoring Capsules

ChemSet™ Maxima™ Spin Capsule is a heavy duty, acrylic capsule anchor of a measured dose to suit the Ramset™ ChemSet™ Anchor Studs. ETA Certified for fast loading time in dry, wet and flooded holes.

Item Code	Anchor Size (mm)	Pack Qty
CHEM10	M10	10
CHEM12	M12	10
CHEM16	M16	10
CHEM2024	M20 & M24	6



ChemSet™ Nylon Sleeves for Hollow Masonry Anchoring with ChemSet™ 101 PLUS

ChemSet™ Nylon and Metal mesh sleeves form a solid plug of adhesive in the brick or block cavity to provide secure anchoring point. Durable nylon sleeves ideal for 3 hole brick and hollow concrete block.

Item Code	Sleeve Length (mm) x Drill Size (mm)	To Suit Stud	Pack Qty
ISS08	64 x 12	M8	100
ISS10	64 x 14	M10	100
ISS12	64 x 16	M12	100



ChemSet™ Metal Mesh Sleeves for Hollow Masonry Anchoring with ChemSet™ 101 PLUS

ChemSet™ Nylon and Metal Mesh Sleeves form a solid plug of adhesive in the brick or block cavity to provide secure anchoring point. Fine Metal Mesh Sleeves ideal for a 10 hole brick

Item Code	Sleeve Length (mm) x Drill Size (mm)	To Suit Stud	Pack Qty
ISM12	1000 x 16	M10/M12	1
ISM16	1000 x 22	M16	1



ANCHORING ADHESIVES

Accessories

Performance Icons



Chemical Anchoring

Accessories



ChemSet™ MIXER NOZZLES

Item Code	Description	Pack Qty
ISNE	Mixer Nozzle for ChemSet™ Injection Range	5

ChemSet™ SYSTEMS APPLICATORS

Item Code	Description	Pack Qty
CUAP	Chemset™ Universal Applicator	1
CUAR18	Chemset™ Cordless Applicator	1
E108	Chemset™ Applicator	1

ChemSet™ HOLE CLEANING ACCESSORIES

Item Code	Anchor Size (mm)	Description	Pack Qty
HCBT13	8 - 12	Brush	1
HCBT20	16 - 20	Brush	1
HCBT26	20 - 24	Brush	1
HCPHV	-	High Volume Dust Blower	1



ChemSet™ Anchoring Kit

Item Code	Description	Pack Qty
CHEMKITBAG	Tool bag, CUAP, HCPHV, HCBT13, HCBT20, HCBT26	1



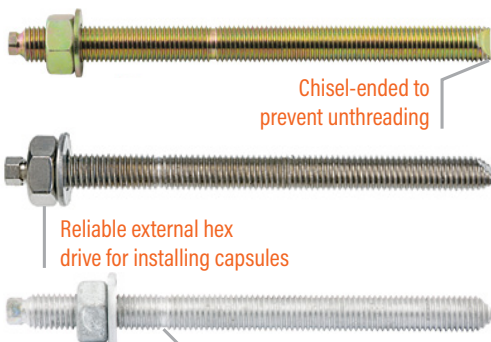
ANCHORING ADHESIVES

ChemSet™ Studs

Performance Icons



ChemSet Anchor Studs



Chisel-ended to prevent unthreading

Reliable external hex drive for installing capsules

Depth set mark to ensure correct embedment.



Multi Directional Application

- High performance Grade 5.8 Carbon Steel.
- Hot dip galvanised to AS 1650 and AS 1214.
- AISI316 stainless steel for coastal applications.
- Pre-cut to standard chemical anchoring lengths.



Carbon Steel Zinc Plated - ANCHOR STUDS

Item Code	Anchor Size (mm)	Anchor Length (mm) x Thread Size	Pack Qty
CS12160	12	160 x M12	10
CS16190	16	190 x M16	10
CS20260	20	260 x M20	6
CS24300	24	300 x M24	6

Hot Dipped Galvanised - ANCHOR STUDS

Item Code	Anchor Size (mm)	Anchor Length (mm) x Thread Size	Pack Qty
CS08110GH	8	110 x M8	10
CS10130GH	10	130 x M10	10
CS12160GH	12	160 x M12	10
CS16190GH	16	190 x M16	10
CS20260GH	20	260 x M20	6
CS24300GH	24	300 x M24	6

Stainless Steel 316 - ANCHOR STUDS

Item Code	Anchor Size (mm)	Anchor Length (mm) x Thread Size	Pack Qty
CS08110SS	8	110 x M8	10
CS10130SS	10	130 x M10	10
CS12160SS	12	160 x M12	10
CS16190SS	16	190 x M16	10
CS20260SS	20	260 x M20	6
CS24300SS	24	300 x M24	6

Trades & Applications

Applications	Steel Fabricator	Maintenance Fitter	Carpenter	Seating Contractor	Plumbing Contractor	Fencing Contractor	Electrical Contractor
Anchoring structural steel column/beams	✓						
Machinery hold down		✓					
Installing handrails, balustrades & safety barriers	✓					✓	
Public Seating				✓			
Timber Frame Hold Down			✓				
Pipe & cable tray installation					✓		✓

● Carbon Steel Zinc Plated

◆ Stainless Steel 316

◆ Galvanised

ANCHORING ADHESIVES

Threaded Inserts

Performance Icons



Threaded Inserts - Internally Threaded Anchors

Description

Ramset™ Threaded Inserts are steel threaded sockets that sit flush with the concrete surface and allow use of various head style bolts. Available in zinc plated carbon steel or high corrosion resistant AISI 316 (A4). Bolts can be removed and reinstalled later - ideal for event seating, hand rails and safety barriers.

✓ Key Features

- Internal thread .
- Flush fitting.
- Temporary and permanent fixings.

✓ Advantages

- Flush with concrete surface.
- Variable bolt head finish options.
- Bolt is removable.
- No trip hazard.
- Shallow embedment.



Typical Properties

Steel Grades

500 MPa Carbon Steel, AISI 316 (A4) Stainless Steel

Product Codes & Specifications

Item Code	Anchor Size (mm)	Anchor Length (mm) x Thread Size	Pack Qty
◆ 062860	8	60 x M8	10
● 062480	10	65 x M10	10
◆ 062960	10	65 x M10	10
● 062760	12	75 x M12	10
◆ 063100	12	75 x M12	10
● 062800	16	125 x M16	10
◆ 051175	16	125 x M16	10
● 062810	20	170 x M20	10

● Carbon Steel Zinc Plated

◆ Stainless Steel 316

◆ Galvanised

Construction Chemicals

Ramset™ Construction Chemicals covers all the essential onsite products to finish off your project.

The construction chemical range includes:

- Acrylic and polyurethane sealants for interior and exterior applications
- Construction adhesives
- Expanding polyurethane foams
- Fire rated foam and sealant
- Epoxy repair mortar and grout
- Concrete additives for render and remedial work

SEALANTS

Acrylic and Polyurethane

Roof Seal

Description

Roof Seal Silicone Sealant is UV and weather resistant for exterior plumbing and roofing applications. Its neutral cure formula is non-corrosive so it is safe to use with all metals including galvanised steel and anodised aluminium. It is also suitable for cement, brick and concrete.

✓ Features & Benefits

- UV and weather resistant.
- Excellent resistance to accelerated aging and weathering to ASTM C792.
- Excellent flexibility – joint movement $\pm 25\%$.
- Thixotropic - No sagging or running.
- Suitable for contact with drinking water – AS 4020:1994.



✓ Trades & Applications

Applications	Maintenance Fitter	Plumbing Contractor	Mechanical Services	Formworker	Electrician	Brick Layer
Joints in Brick & Blockwork	✓					✓
Rain Water Plumbing	✓	✓				
Concrete Penetrations	✓	✓	✓		✓	
Gaps in Formwork				✓		
Brick & Blockwork Penetrations	✓	✓	✓		✓	

Product Codes & Specifications

Item Code	Pack Size	Colour	Chemical Type	UV Resistant	Neutral Cure	VOC Compliant	Box Quantity
RFSLTRG300	300 ml	Translucent	Silicone	Yes	Yes	Yes	20
RFSLALG300	300 ml	Aluminium	Silicone	Yes	Yes	Yes	20

SEALANTS

Acrylic and Polyurethane

Gap Seal

Description

Gap Seal paintable acrylic sealant is flexible to resist cracking when used to seal gaps and cracks prior to painting. Gap Seal provides a neat and tidy finish around architraves, skirtings, chair and picture rails and is paintable with acrylic and oil based surface coatings.

✓ Features & Benefits

- Resists cracking - flexible.
- Paintable.
- User friendly: Low odour and easily clean up with water .
- User friendly – low odour.
- Easy to use – sag resistant.
- Low VOC.



✓ Trades & Applications

Applications

Ceiling & Partitioning Contractor

Dry Wall Gaps



Product Codes & Specifications

Item Code	Pack Size	Colour	Chemical Type	Box Quantity
GPSLWHG450	300 ml	White	Acrylic	20

SEALANTS

Acrylic and Polyurethane

BlazeBrake™ Sealant

Description

BlazeBrake™ is a flexible fire and acoustic rated acrylic sealant, suitable for sealing gaps, joints and penetrations in dry wall partitions, concrete wall and block walls. Prevents the spread of flames, smoke and gases through walls and floors or between building compartments. BlazeBrake™ is approved for use with cable, metal pipe and service penetrations (see fire test reports for specific dimensions and configurations BlazeBrake™ is approved for).

✓ Features & Benefits

- Fire rated to AS 1530.4:2014 for wall & floor penetrations and as a control joint. (FC11946-001).
- Acoustic rated.
- Flexible and crack resistant.
- Joint movement $\pm 15\%$.
- Easy to dispense in cold weather.
- Non toxic.
- Low odour.
- Easy tooling.



✓ Trades & Applications

Applications	Plumbing Contractor	Electrical Contractor	Ceiling & Partitioners	Brick Layer
Joints in brick & blockwork				✓
Concrete penetrations	✓	✓		
Brick & blockwork penetrations	✓	✓		
Fire rated penetrations	✓	✓		
Fire rated dry wall gaps	✓	✓	✓	
Dry wall gaps			✓	

Product Codes & Specifications

Item Code	Pack Size	Colour	Box Quantity
BLBRGYC	300 ml	Grey	20
BLBRGYS	600 ml	Grey	15

ADHESIVES

Construction Adhesive

Safe-T-Bond™

Description

Safe-T-Bond™ is formulated with strong initial suction / grab, which makes it ideal for installing wall panelling, flooring, skirting boards and architraves. For installing particle board sub-floor to timber, steel and concrete joists (not for installing timber floors on top of particle board sub-floor or concrete slabs).

Solvent free Safe-T-Bond™ will not attack polystyrene.

It has no fumes and can be cleaned up with water.

Approvals Bond strength exceeds requirements of AS 2329:1999.

✓ Features & Benefits

- Low odour – no solvent fumes.
- Easy to use.
- Easy clean up – use water.
- Fast initial grab – minimises slippage on vertical surfaces.
- Easy to dispense at low temperatures.
- Bridges gaps up to 9 mm – effective on uneven surfaces.
- Long repositioning time – up to 60 minutes.
- Easy to use, re-sealable sausage – no caulking gun.
- Will not attack polystyrene foam.



✓ Trades & Applications

Applications	Builder	Carpenter	Ceiling & Partitioners
Wall Panels to Studs	✓	✓	✓
Bonding Polystyrene Foam	✓	✓	✓
Floor Panels to Joists	✓	✓	

Product Codes & Specifications

Part No.	Pack Size	Colour	Chemical Type	Box Quantity
STBDL1	1 Litre	White	Acrylic	10

SELF-EXPANDING FOAM

Expanding Polyurethane Foam

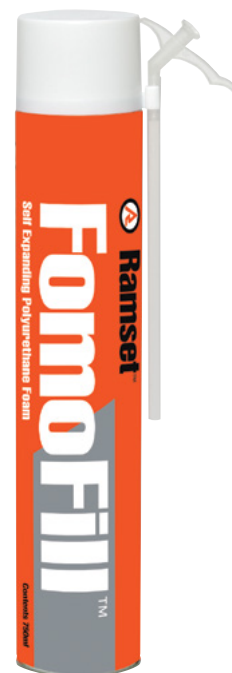
FomoFill™

Description

The Ramset™ FomoFill™ is a versatile polyurethane polymer that reacts with moisture in the air causing it to expand to fill any shaped hole or cavity. The cured foam can then be cut or shaped and painted as desired. FomoFill™ is great for thermal insulation, to block out drafts or to fill or repair big holes prior to painting.

✓ Features & Benefits

- Expands to fill BIG holes.
- Once cured, can be cut and shaped as required.
- Non-shrink.
- Can be sanded, filled and painted to produce a neat finish.
- Excellent insulator.
- Predominantly closed cell structure.
- Ozone friendly: Free from CFC, FC and HFC.



✓ Trades & Applications

Applications	Plumbing Contractor	Electrical Contractor	Mechanical Services	Window Installer	Formworker
Window frames				✓	
Dry wall penetrations	✓	✓	✓		
Gaps in formwork					✓
Brick & blockwork penetrations	✓	✓	✓		
Concrete penetrations	✓	✓	✓		

Product Codes & Specifications

Part No.	Pack Size	Chemical Type	Box Quantity
FMFLG500	500 ml	Polyurethane	12
FMFLG750	750 ml	Polyurethane	12

SELF-EXPANDING FOAM

Expanding Polyurethane Foam

BlazeBrake™ Foam

Description

Ramset™ BlazeBrake™ Fire Rated Foam is a one component expanding PU foam suitable for sealing construction joints and service penetrations. It prevents the penetration and transfer of flames, smoke and gases between building compartments. BlazeBrake™ FR Foam reacts with moisture in the air causing it to expand to fill any shaped hole or cavity. The cured foam can then be cut or shaped and painted as desired.

✓ Features & Benefits

- Fire rated to AS 1530.4:2014 for control joint systems (FCO-2662 Rev.A).
- 50% post expansion rate.
- Suitable for sealing gaps around window and door frames.
- Sound dampening and sealing against draughts and moisture.
- High bond strength.
- Excellent dimensional stability.
- Can be painted and covered with plaster.



✓ Trades & Applications

Applications	Plumbing Contractor	Electrical Contractor	Mechanical Services	Window & Facade	Ceiling & Partitioners	Sealing / Waterproofing
Fire rated penetrations	✓	✓	✓		✓	
Fire rated dry wall gaps					✓	
Dry wall gaps					✓	
Concrete penetrations	✓	✓	✓			
Brick & blockwork penetrations	✓	✓	✓			
Window frames				✓		
Joints in In-situ concrete						✓
Dry wall penetrations	✓	✓	✓			

Product Codes & Specifications

Part No.	Pack Size	Colour	Chemical Type	Box Quantity
FRF700	750 ml	Pale Yellow	Polyurethane	12

CONCRETE PATCH & REPAIR

Engineered Epoxy Solutions

Epoxy Paste 1210

Description

Ramset™ Epoxy Paste 1210 is a tough 100% solids, trowellable epoxy repair mortar for use in high build concrete repair applications such as:

- Structural repairs to damaged concrete and masonry.
- Filling holes, wide cracks, chips in concrete.
- Filling gaps between steel and concrete and timber and concrete.



✓ Features & Benefits

- Sets rock hard.
- Bond is stronger than concrete.
- High build consistency.
- Suitable for filling voids with thick cross-section – low heat generated during cure.
- Trowellable.
- High compressive strength.
- 100% solids epoxy – solvent free and negligible shrinkage.



✓ Trades & Applications

Applications	Concreter	Building Contractor	Concrete Remediation	Civil Contractor	Construction Contractor	Formworker
Repair broken and spalled concrete	✓	✓	✓	✓	✓	✓

Product Codes & Specifications

Part No.	Box Quantity	Chemical Type	Colour	Pack Size	Type	VOC Compliant
EP1210L4	1	Epoxy	Grey	4 L	Trowellable Paste	YES
EP1210L20	1	Epoxy	Grey	20L	Trowellable Paste	YES

GROUTS

Engineered Epoxy Solutions

Epoxy Grout 7042

Description

Epoxy Grout 7042 is a 2-part 100% solvent free epoxy resin with graded fillers, which can be used as is or with additional fillers to create a range of application consistencies. Epoxy Grout 7042 is tough, durable and specially formulated for strong bond to concrete, brick and block. For structural underpinning of precast concrete, crane rails and anchoring reinforcing bar and anchor bolts. Ideal for grout tubes.

Features & Benefits

- Standard version reaches 80 MPa in 3 hours (@20°C).
- Low exotherm version for deep pours (up to 500 mm) and hot climates.
- Tough, durable, 100% solvent free epoxy.
- High flow properties - good bonding and penetration.
- Dry and damp concrete.
- Resistant to vibration and dynamic loads.
- Fully cures in temperatures down to 5°C.



Available in fast cure or deep pour (low exotherm) grades



Trades & Applications

Applications	Construction Contractor	Concreter	Civil Contractor	Building Contractor	Balustrade Contractor	Steel Fabricator
Filling voids under concrete panels	✓			✓		
Filling Grout Tubes		✓		✓		
Bridge Beam Supports	✓		✓			
Baseplate Underpinning	✓			✓		✓
Anchoring crane rails			✓			
handrails, balustrades & safety barriers			✓	✓	✓	

Product Codes & Specifications

Part No.	Colour	Description	Pack Size
EP7042L13	Off-White	Epoxy Grout 7042 Standard	13 L
EP7042L3	Off-White	Epoxy Grout 7042 Standard	3 L
EP7042LEL13	Off-White	Epoxy Grout 7042 Low Exotherm	13 L
EP7042LEL3	Off-White	Epoxy Grout 7042 Low Exotherm	3 L

GROUTS

Engineered Epoxy Solutions

Premier Grout MP™

Description

Ramset™ Premier Grout MP™ is a Class A, non shrink cement grout that complies with AS MP20, Part 3 (1977). The product consists of a speciality blend of cement, graded aggregate and other chemically reactive agents that compensate for drying shrinkage commonly found in cement products.

✓ Features & Benefits

- High strength.
- Non-shrink - Good dimensional stability - Complete void filling.
- Versatile - Can be dry packed, rammed, trowelled, poured and pumped over short distances.
- Economical, low in-place cost.
- Ready to use, pre mixed, requires only the addition of water.
- Non-staining – chloride and iron free.
- Lower water/cement ratio - Reduced drying shrinkage.



✓ Trades & Applications

Applications	Construction Contractor	Concreter	Civil Contractor	Building Contractor	Steel Fabricator	Maintenance Fitter
Baseplate underpinning			✓		✓	✓
Filling voids under concrete panels	✓	✓	✓			
Filling grout tubes	✓	✓	✓			
Grouting bridge beam supports	✓		✓			
Installing handrails, balustrades & safety barriers	✓		✓	✓	✓	

Product Codes & Specifications

Part No.	Chemical Type	Pack Size
RPGMP20	Cement	20 Kg

ADDITIVES

Bonding Agent

CemCrete™

Description

Ramset™ CemCrete™ is a high molecular weight polymer concentrate, which when diluted and added to cement mixtures reduces cracking and improves adhesion. CemCrete™ also aids bonding of concrete, renders, mortars and toppings to existing concrete, block and brick. CemCrete™ is ideal for priming porous surfaces for ceramic tiling and to add flexibility to cement tile grouts and adhesives.

✓ Features & Benefits

- Improves strength and toughness of cement mixtures.
- Improves adhesion of cement mixtures to existing concrete, brick and block.
- Strong bond.
- User friendly: Low odour and easily cleans up with water
- High mechanical strength.



✓ Trades & Applications

Applications	Concreter	Concrete Remediation	Brick Layer	Formworker
Improve adhesion of cement to concrete	✓	✓	✓	✓
Bonding cement render to brick, block & concrete		✓		
Bonding new concrete to old	✓	✓		✓

Product Codes & Specifications

Part No.	Pack Size	Chemical Type	Box Quantity
CMCRL5	5 Litre	Resin	1
CMCRL20	20 Litre	Resin	1

Erection and Installation

Our unique engineered bracing and connection systems, provide simple solutions for structural concrete connection, reducing both labour and material costs.

Our offer in this category includes:

- OrbiPlate™
- ReidBrace™



Erection and Installation

Connection Systems

OrbiPlate™

Description

OrbiPlate™ overcomes the major headache that comes with bolted cast-in connections, getting the holes to line up! The methods traditionally used to overcome this were time consuming, costly and often structurally inadequate.

The patented OrbiPlate™ system is used when connecting steel to steel or steel to concrete elements and delivers connection tolerances of up to 20mm around the centre of the connection. It also provides the ability to achieve fine locational accuracy when positioning each steel member.

OrbiPlate™ is quick and easy to install. The steel member is supplied to site with a pre-formed hole (70mm), which can be punched or cut at the centre of the connection location. The main washer is then placed over the hole, rotated to locate the slot over the ferrule, then secured using the class 8.8 bolt through the small washer. The bolt can be positioned anywhere along the elongated slot, providing up to 20mm tolerance in all directions.



Provides ± 20mm positional tolerance. No rework or call outs when connections don't line up.

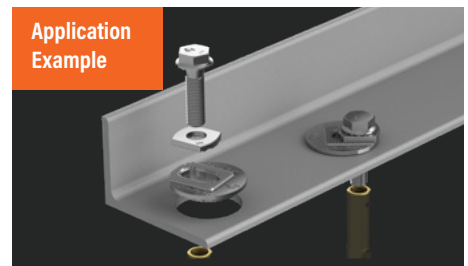
✓ Features & Benefits

- Utilises readily available Reid™ Elephant Foot™ ferrules for steel to concrete connections.
- OrbiPlate™ is made from high tensile steel.
- Hot Dip Galvanised finishes.
- It is comprising of two washers (one large and one small) and is supplied with a M16 or M20 class 8.8 bolt.
- Capacity is limited to either the ferrule cast into the concrete or the class 8.8 bolt*.
- For use with a greater fixture thickness, please consult your local Project Engineer.

✓ Advantages

- No lost time.
- No hot work, either blowing out holes or welding.
- No call outs when connections don't line up.
- OrbiPlate™ locks in place.
- Fine positional adjustment allows accurate positioning of each steel member.
- OrbiPlate™ provides a high capacity structural connection.

Application Example



Product Codes & Specifications

OrbiPlate™ fits into a pre-formed hole in steel component (diameter 70mm ± 1mm)

Part Number	Description	Finish	Matching Ferrule	Fixture Thickness	Pack Quantity
ORB2016BGH	OrbiPlate™ M16	Hot Dip Gal	FE16095GH	6 – 12 mm	20
ORB2020BGH	OrbiPlate™ M20	Hot Dip Gal	FE20095GH	6 – 16 mm	20

Erection and Installation

Engineered Brace System

ReidBrace™

Description

ReidBrace™ is an off-the-shelf system that provides design engineers and constructors with an economic solution for tension bracing of structures, tie-back applications and temporary works bracing.

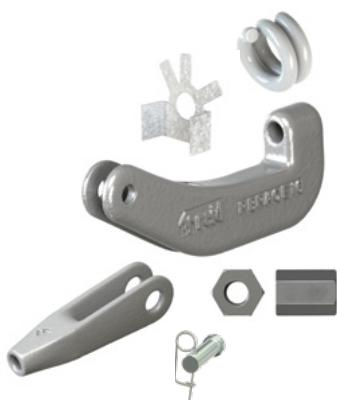
ReidBrace™ utilises ReidBar™, a user friendly continuously threaded reinforcing bar system, as tension members. This makes ReidBrace™ a unique system that is easy to install with minimum extra processes onsite.



ReidBrace™

Boxed Set contents:

1. Reid™ Tension Spring
2. Reid™ Tab Washer
3. RBRACE
4. RBRACE-END
5. ReidBar™ Nut x 2
6. Pin and Clip



Application Example



ReidBrace™ Boxed Set kit Codes

Bar Size	Finish	Kit Code
12mm	Galvanised	RBRACE12-SET
16mm	Galvanised	RBRACE16-SET
20mm	Galvanised	RBRACE20-SET(A)
25mm	Galvanised	RBRACE25-SET
32mm	Galvanised	RBRACE32-SET

Important Disclaimer: Any engineering information or advice ("Information") provided by Ramset™ in this document is issued in accordance with a prescribed standard, published performance data or design software. It is the responsibility of the user to obtain its own independent engineering (or other) advice to assess the suitability of the Information for its own requirements. To the extent permitted by law, Ramset™ will not be liable to the recipient or any third party for any direct or indirect loss or liability arising out of, or in connection with, the Information.

Ramset™ Australia

Sales, Orders and Enquiries

Tel: 1300 780 063

Email: enquiry@ramset.com.au

Web: www.ramset.com.au

Web Links



Keep up to date with
Ramset™ on our socials'



Australian Trade Centre

New South Wales
71 Carnarvon Street,
Silverwater, 2128

Ramset™ 1 Ramset Drive, Chirnside Park 3116

Information in this documents is correct at the time of printing. Readers should contact Ramset™ or consult Ramset™ detailed technical information to ensure product is suitable for intended use prior to purchase.

ITW Australia Pty Ltd ABN 63 004 235 063 trading as Ramset™

© Copyright 2023. ™ Trademarks of Cetram Pty. Ltd. Used under license by Ramset™

