

Universal Wall Anchors

PERFORMANCE		MATERIAL	INSTALLATION RELATED					

Description

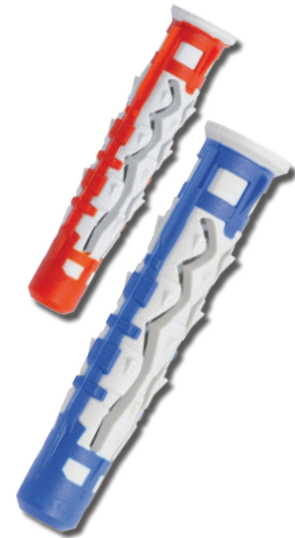
The Ramset Universal Anchor is designed for use in an extensive range of light duty fixing applications into brick, concrete or plasterboard

Features & Benefits

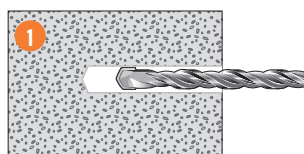
- Suitable to anchor into stone, concrete, solid brick, hollow wall and hollow brick
- Strong holding power: up to 30kg into solid substrate and up to 10kg into hollow wall
- 4 anti-rotation fins allow perfect functioning in hollow wall

Applications

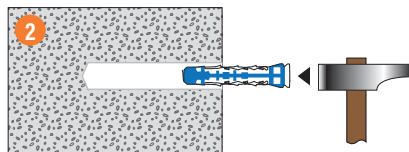
- Light-duty application
- Light shelves fixing
- Equipment and lighting
- Furniture



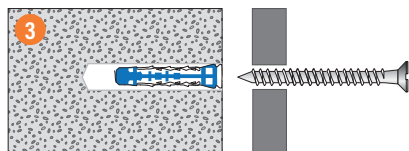
Installation



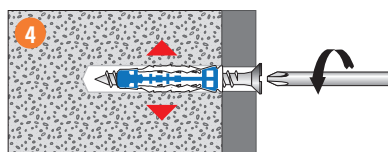
1. Drill hole to correct diameter and depth using the table below.



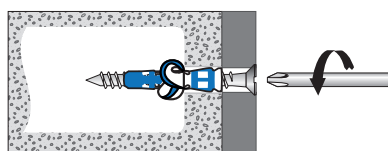
2. Hammer the Universal Anchor into the drilled hole.



3. Push the screw through the object being hung and directly into the anchor



4. Drive in screw with a #2 Philips driver until tight.



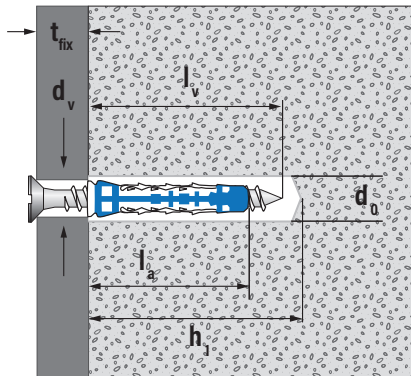
Universal Wall Anchors

These anchors are not recommended for structure critical applications and are typically used for simple fixing and finishing applications. Their capacity information is therefore presented in simple Working Load Limit format.

Installation and Working Load Limit performance details

Anchor code		Installation details (mm)						Working Load Limit (Tension kg)		
FAMILY	SKU	Max fixture thickness (mm) t_{fix}	*Drilling depth (mm) h_1	Drill diameter (mm) d_o	Fixture hole diameter (mm) d_v	Anchor length (mm) l_a	Screw length (mm) l_v	Concrete (20MPa) (kg)	Plasterboard (13mm) (kg)	Solid Brick (kg)
UA06038	UA06038/6	5	55	6	3.5 - 4.5	35	50	30	10	30
	UA06038/40									
UA08050	UA08050/4	5	65	8	4.5 - 6	50	60	30	20	40
	UA08050/20									

*Note: Drilling depth required for Concrete and Solid Brick or clearance depth for plasterboard substrate



For further information, please contact Ramset™
 AU - PHONE: 1300 780 063 www.ramset.com.au
 NZ - PHONE: 1800 RAMSET (726738) www.ramset.co.nz